

BMW KDS Wheel Alignment System

WinAlign® Program Version 12.1



Contents

| | |
|--|-----------|
| Getting Started | 1 |
| 1.1 Introduction | 1 |
| Turning Power On | 1 |
| BMW Account | 1 |
| 1.2 Operating the Console..... | 2 |
| Using “Softkeys” | 2 |
| Using the Handheld Infrared Wireless Remote Control..... | 3 |
| Resetting the Program | 3 |
| 1.3 Conventional Sensor Setup (DSP508) | 4 |
| 1.4 Camera Sensor Setup (DSP600 or HS4X1 Sensors) | 5 |
| Operation | 6 |
| 2.1 Work Order Information..... | 6 |
| Optional Tire Information..... | 6 |
| 2.2 Specifications | 7 |
| Specifications: Measurement vs. Adjustment | 8 |
| Additional Information | 9 |
| Ride Height | 10 |
| 2.2 Measurements | 12 |
| Sensor Operation | 12 |
| Caster, S.A.I., Included Angle and Turning angle Measurements..... | 13 |
| Steering Wheel Status | 15 |
| “Before” Measure Maximum Steering Angle..... | 15 |
| Alignment Measurements Printout..... | 16 |
| 2.3 Adjustments | 17 |
| Rear Camber Adjustment..... | 17 |
| Rear Toe Adjustment | 17 |
| Front Camber and Caster Adjustment | 18 |
| Caster Bar Graph doesn't Match Measured Caster | 18 |
| Front Toe Adjustment..... | 18 |
| 2.4 Completing the Alignment Process | 20 |
| Second Caster Measurement | 20 |
| Steering Wheel Status | 21 |
| Measure Maximum Steer Angle (Re-measure) | 21 |
| Does the vehicle have ESC (if unsure, press "Yes")? | 22 |
| Final Measurements Overview..... | 23 |
| Saving Final Work Order..... | 23 |
| Alignment Printouts | 23 |
| Additional Alignment Steps..... | 26 |
| 3.1 Adaptive Cruise Control..... | 26 |
| 3.2 Active Front Steering..... | 28 |
| 3.3 Dynamic Stability Control (DSC) | 30 |
| Program Details..... | 31 |
| 4.1 Work Management | 31 |
| Saving Current Work Order..... | 33 |
| Recalling a Work Order for Review or Print | 33 |
| 4.2 Raise Selected Axle | 34 |
| 4.3 WinToe® | 35 |
| Glossary | 41 |

Getting Started

1.1 Introduction

This manual provides information and operation instructions required to operate the BMW Computerized Wheel Alignment System.

“References”

This manual assumes that you are already familiar with the basics of wheel alignment. *Italics* are used to refer to specific parts of this manual that provide additional information or explanation. For example, *refer to “Recall Specifications.”* These references should be read for additional information to the instructions being presented.

These BMW Operation Instructions are a supplement to the standard WinAlign Operation Manual, Form 3850T, supplied with this equipment.

Turning Power On

The main power switch is located on the back of the console where the AC power cord is connected to the cabinet. Some cabinet designs will have an additional power switch on the left side of the cabinet. This switch is used to power On/Off the systems computer but leaves power on to the charging stations available for DSP500 sensors and remote indicators.

BMW Account

The BMW logo screen is only displayed when the BMW account is activated. The "WinAlign" logo is shown when the standard account is activated.

The "BMW" account includes specific procedures required by BMW of North America and is intended for use by authorized BMW dealers.



K1 - Exit Aligner K2 (Blank) K3 (Blank) K4 - Begin Alignment

There are two possible selections on the first level of keys that are displayed on this screen:

"Exit Aligner" is activated by selecting the K1 softkey. Always press "Exit Aligner" before turning the power off to shutdown the system.

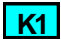


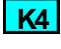


"Begin Alignment" is activated by pressing the K4 softkey. The green highlight indicates this is the logical next step in the alignment process.

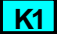



Other softkey selections will appear if multiple account keys are available.

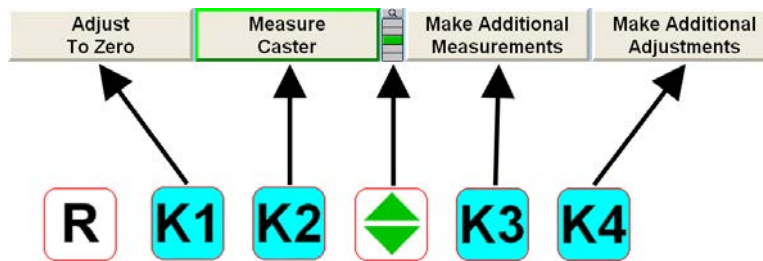
1.2 Operating the Console



Using “Softkeys”

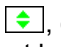
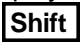

The softkeys, located on the keyboard, provide operator control of the program. These keys are identified as:


-  K1 key
-  K2 key
-  K3 key
-  K4 key
-  Menu shift key
-  Reset key

The four menu labels that appear at the bottom of each screen are referred to as the softkey labels. These labels indicate the action that the program will take when the corresponding , , , or  key is pressed.




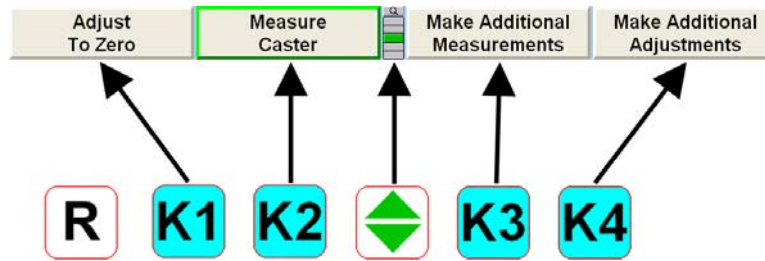
The vertically stacked squares between the  and  softkeys indicate how many levels of menu labels are available. Six levels of menus are possible. The highlighted box indicates the menu level that is currently displayed.

Pressing the menu shift softkey, , changes the menu level. When this key is pressed, the menu labels will change to the next level “down.” If the last menu level is currently displayed, the next step will be to the first menu level. To go to the next menu level “up,” press  and .

Pressing  and F6 will enlarge the current softkey menu level. The softkey associated with the label is shown on the left side of the labels and the menu level is indicated on the right side of the labels. Pressing F6 again will cause the menu to return to the normal softkey setting.

Pressing F6, or pressing and holding with a pointing device on the menu level indicator, will cause all of the menus available to appear. The dark green color, displayed behind the entire row of softkeys, indicates the active menu level. Pressing F6 again will cause the menu to return to the normal softkey setting.

Throughout this manual, the statement Press “nnnnnn” indicates the label of the softkey to press. If the required label is not on the current menu,  must be pressed to change menu levels until the desired label is displayed.







Some softkey labels have a green border as depicted around the K4 softkey shown above.

Generally, the softkey with the green border (usually **K4**) is the appropriate key to press to continue with the procedure being performed.

Using the Handheld Infrared Wireless Remote Control

The remote control provides operation of the WinAlign® program from a distance by duplicating the five softkeys.

The remote control has six softkeys: **K1**, **K2**, **K3**, **K4**, , and a zoom key . Pressing  will enlarge the current softkey menu level and is equal to pressing **Shift** and  on the main keyboard.

To use the remote control, point the front end of the transmitter toward the front of the wheel aligner console and press the appropriate softkey.

NOTE: The remote control transmitter is a “line-of-sight” device and will not transmit signals through solid objects.

Resetting the Program

The wheel alignment program may be reset **Error! Bookmark not defined.** at any time during the measurement process by pressing the **R** key, located at the upper left-hand corner of the keyboard.

A confirmation screen will appear to verify that the “Reset” button was pressed intentionally.

When this screen appears, press “YES” to reset the program or “NO” if the program should not be reset.

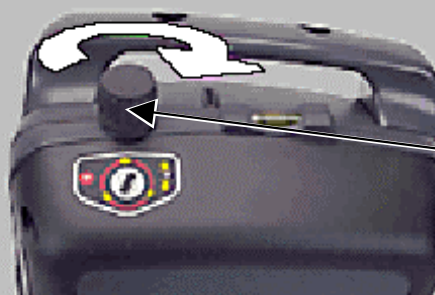
When the aligner is reset, the information collected for the measurements in progress will be erased and the display will return to the “BMW Logo” screen.

1.3 Conventional Sensor Setup (DSP508)

Before mounting the sensors on the BMW special adaptors, rotate the index mark on the sensor shaft to the 12 o'clock position with the sensor held vertical and lock it in place using the sensor lock knob. Do not loosen the sensor lock knobs.

When instructed to level the sensors, do so only by loosening the locking lever or lock knob on the adaptor, not the lock knob on the sensor.

**INDEX
MARK**



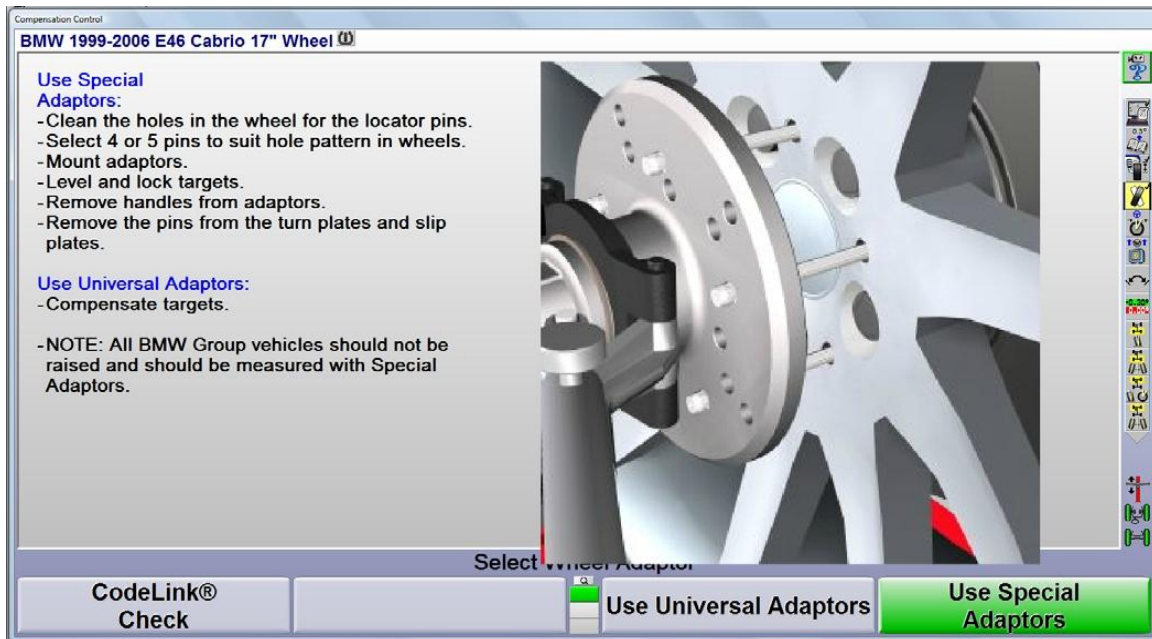
**SENSOR
LOCK
KNOB**

When instructed to level and lock sensors during the BMW software program, the method in which the sensors are leveled and locked when the sensors are mounted to brackets or when mounted to BMW special adaptors is different than the method used when mounting sensors to universal adaptors.

For sensors mounted to the BMW special adaptors, the sensors are secured at the “level” position by tightening the lock knob on the bracket or wheel adaptor, rather than the lock knob on the sensor. Verify that the index mark of the sensor shaft is at the 12:00 o'clock position.

1.4 Camera Sensor Setup (DSP600 or HS4X1 Sensors)

The shaft is not able to rotate on the sensors used with the camera system. Install the sensor to the adaptor. Level and lock the sensor once the adaptor is installed on the vehicle's wheel



Operation

2.1 Work Order Information

Press “Begin Alignment” to begin the wheel alignment measurement process. The “Work Management” screen will appear. This screen shows the basic work order information.

Enter the information. Dark shaded fields must be filled in to continue.

Work Management
Edit Work Order

VIN: [] Work Order: R000009
Mileage: [] License: []
First Reg. [] Technician: []
Chassis No: [] Code No: []

First Name: [] Last Name: []
Company: [] Street: []
City: [] State: []
ZIP: [] Home Tel.: []
Work Tel.: [] Customer Number: 6

Tire Pressure Left Front BAR Right Front BAR Left Rear BAR Right Rear BAR
Tire Tread Depth [] mm [] mm [] mm [] mm
Factory Tires: [] [] [] []

Edit work order, then press "OK".

Cancel Recall Specifications List Work Orders OK

Detailed information regarding this display is available in a later section. Use the TAB key on the keyboard or the mouse to move from field to field on the display.

Optional Tire Information

Use the keyboard to enter the appropriate data into the optional “Edit Tire Information” screen. This information will appear on the printout summary. Press “OK” to continue.

Factory tires will have a star design imprinted on the tire.

When all information is entered select “OK.”

Work Management
Edit Work Order

VIN: WBAB553461JUB1978 Work Order: R000009
Mileage: 32000 License: Jimp
First Reg. 27.3.01 Technician: Pat
Chassis No: E46 Code No: []

First Name: Mike Last Name: Foster
Company: HEC Street: 11250 Hunter Dr
City: St Louis State: MO
ZIP: 63122 Home Tel.: 314-731-0000
Work Tel.: 314-731-3020 Customer Number: 4

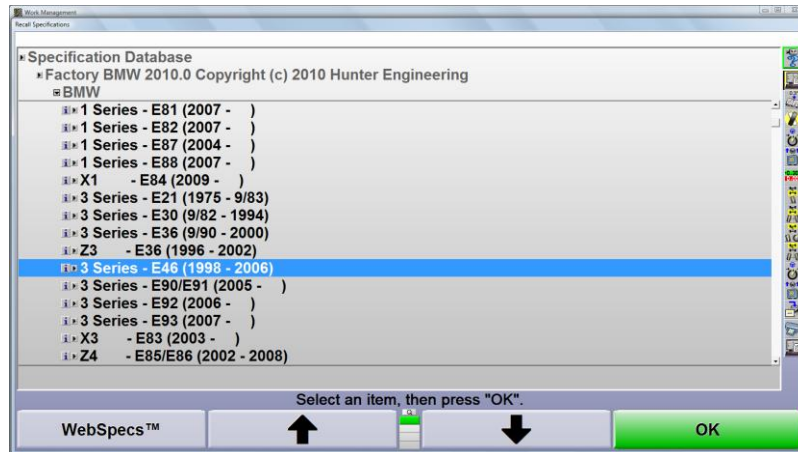
Tire Pressure Left Front BAR Right Front BAR Left Rear BAR Right Rear BAR
Tire Tread Depth 19 mm 19 mm 2.6 mm 2.6 mm
Factory Tires: X X X X


Edit work order, then press "OK".

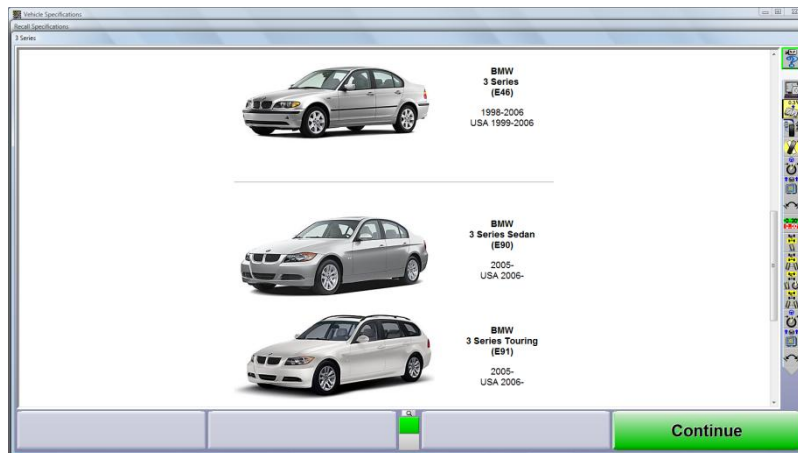
Cancel Recall Specifications List Work Orders OK


2.2 Specifications

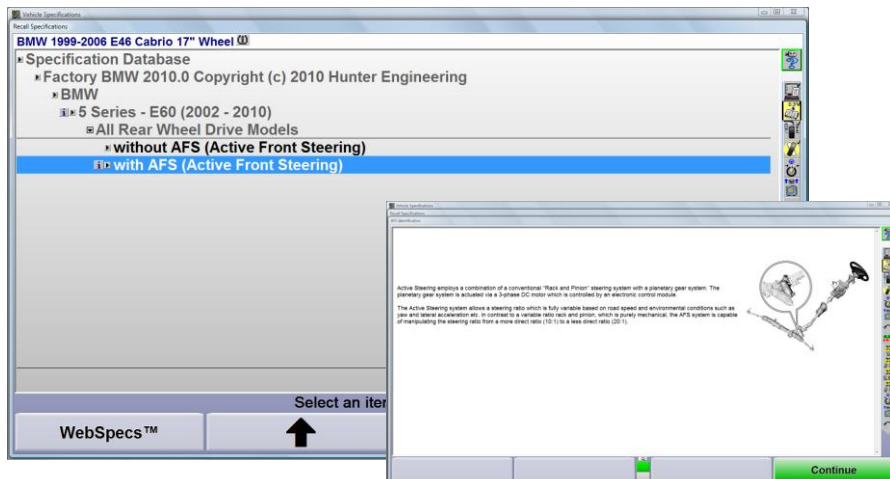
Use the K2 and K3 softkeys or the mouse to select the desired model from the Factory BMW Specification database. It is crucial to select the exact vehicle with the exact options, such as wheel diameter, sport suspension, etc..



For help identifying vehicles, specific body styles, and codes, select the  (info) icon.

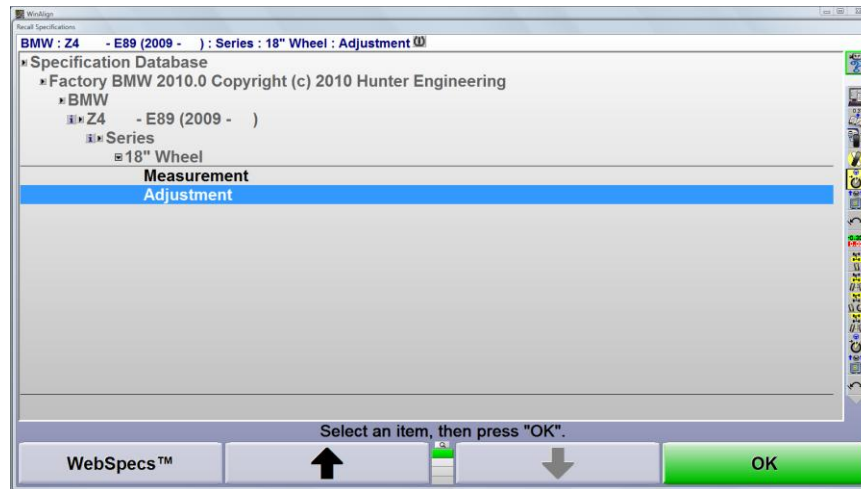


This icon  will display all vehicles that fall under this type and illustrate the years of manufacture, and the body style differences. In some cases another will appear, indicating more info is available, such as the example below.



Specifications: Measurement vs. Adjustment

A specification may contain two specifications displayed as "Measurement" and "Adjustment".



The "Preferred Specification" is the same for both specifications. The tolerances differ, with the "Measurement" spec having a much larger tolerance amount.

The following is an example of a 2009 – 2011 BMW Z4 specification.

| Dimension [degree, min] | | | Before Measurement | Target Data | Max. difference |
|---------------------------|---|-------|--------------------|----------------|-----------------|
| Rear Axle | Camber | left | | -2°00' | +0°05'//-0°05' |
| | | right | | -2°00' | +0°05'//-0°05' |
| | Toe | left | | 0°09' | +0°02'//-0°02' |
| | | right | | 0°09' | +0°02'//-0°02' |
| | | total | | 0°18' | +0°04'//-0°04' |
| Geom. driving axis | total | | 0°00' | +0°12'//-0°12' | |
| Front Axle | Camber | left | | -0°23' | +0°25'//-0°25' |
| | | right | | -0°23' | +0°25'//-0°25' |
| | Toe | left | | 0°07' | +0°02'//-0°02' |
| | | right | | 0°07' | +0°02'//-0°02' |
| | | total | | 0°14' | +0°04'//-0°04' |
| | Track differential angle | left | | | |
| | | right | | | |
| | Max steering lock on curve Inside wheel | left | | -37°39' | |
| | | right | | -37°39' | |
| | Caster | left | | | |
| | | right | | | |
| SAI | left | | | | |
| | right | | | | |
| Setback | total | | 0°00' | +0°15'//-0°15' | |

ADJUSTMENT SPECIFICATION

| Target Data | Max. difference |
|-------------|-----------------|
| -2°00' | +0°25'//-0°25' |
| -2°00' | +0°25'//-0°25' |
| 0°09' | +0°06'//-0°06' |
| 0°09' | +0°06'//-0°06' |
| 0°18' | +0°12'//-0°12' |
| 0°00' | +0°12'//-0°12' |
| 0°00' | +0°12'//-0°12' |
| -0°23' | +0°30'//-0°30' |
| -0°23' | +0°30'//-0°30' |
| 0°07' | +0°06'//-0°06' |
| 0°07' | +0°06'//-0°06' |
| 0°14' | +0°12'//-0°12' |
| | |
| | |
| | |
| | |
| | |
| | |
| | |
| 0°00' | +0°15'//-0°15' |

MEASUREMENT SPEC

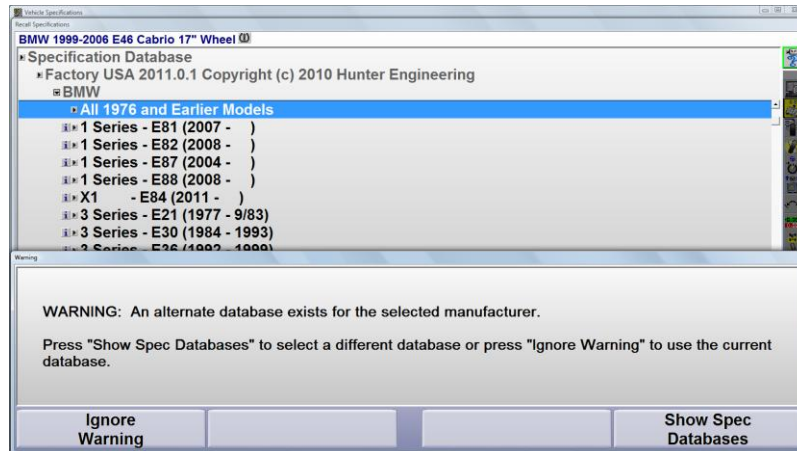
The "Measurement" specification is intended as a method to assess a vehicle's alignment condition. Alignment conditions within the tolerances of the "Measurement" specification are considered adequate and not in need of adjustment.

Vehicle's having alignment measurements beyond the "Measurement" specification tolerances should be aligned using the "Adjustment" specifications.

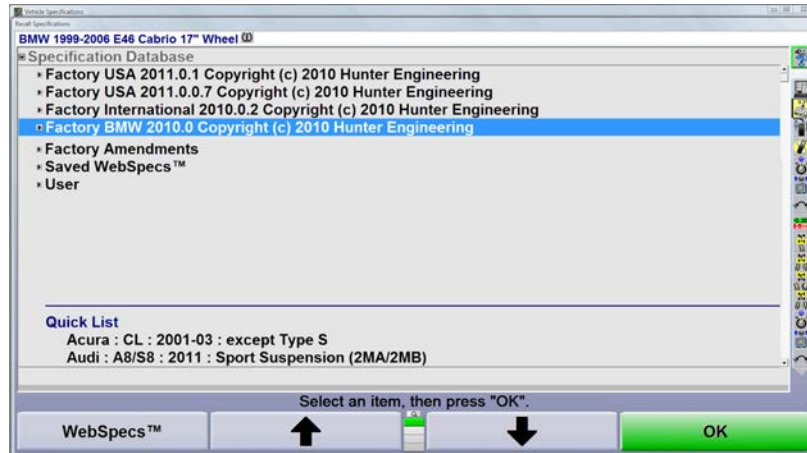
To do this from the "before" measurements, press the K1 "Cancel" softkey. Go to the 2nd row of softkeys and press K2 "Vehicle Specifications". Now press K2 "Recall Specifications". Select the vehicle again and chose the "Adjustment" specification. Continue to press the K4 softkey until the "before" measurement screen is displayed

The alignment process can now continue by pressing K4 "Continue".

NOTE: If a BMW specification is recalled from a database other than the “Factory BMW” database, the following warning message will appear.

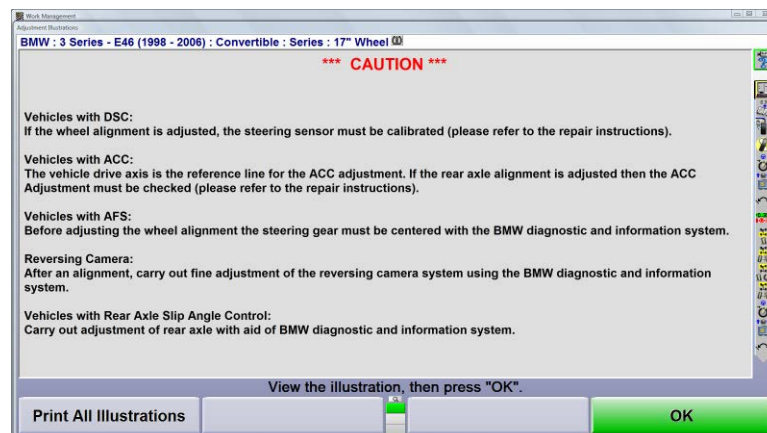


Press “Show Spec Databases” and a list of installed specification databases will appear. Select the “Factory BMW” database, press “OK,” and then select the model.



Additional Information

Additional Information screens may be presented throughout the procedure. These screens are specific to the vehicle selected from the specification database and designed to remind the technician of procedures or processes required for the vehicle selected.

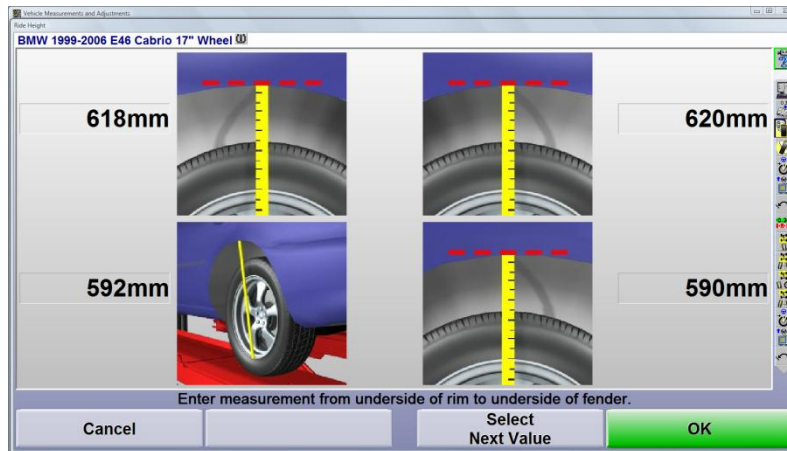


Ride Height

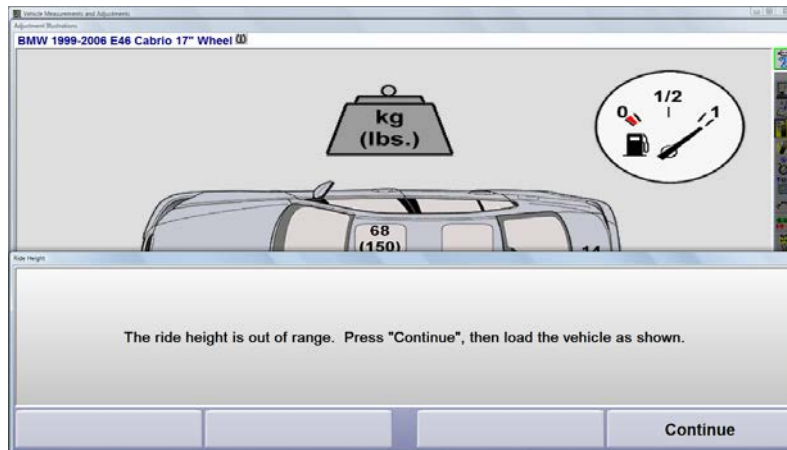
If ride height measurements are required, WinAlign® will display a ride height entry screen with instructions on how to measure ride height for the vehicle selected.

Values may be manually entered via the keyboard or electronically entered using Hunter's Electronic ride height tool.

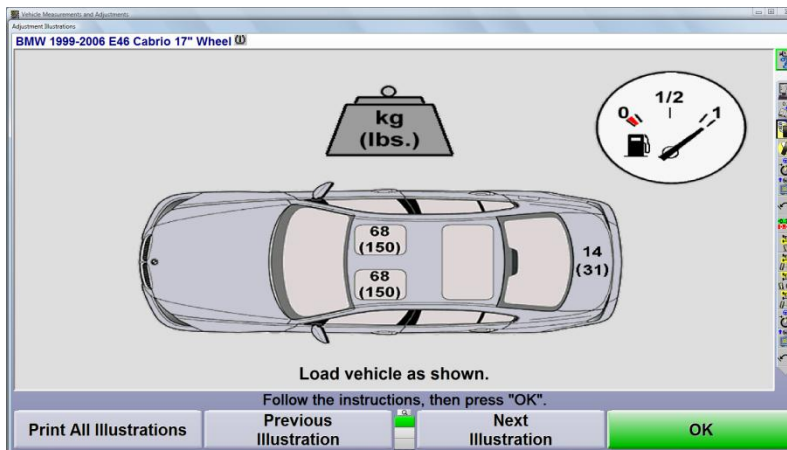
Enter the ride height values and press K4 "OK" to continue the alignment process.

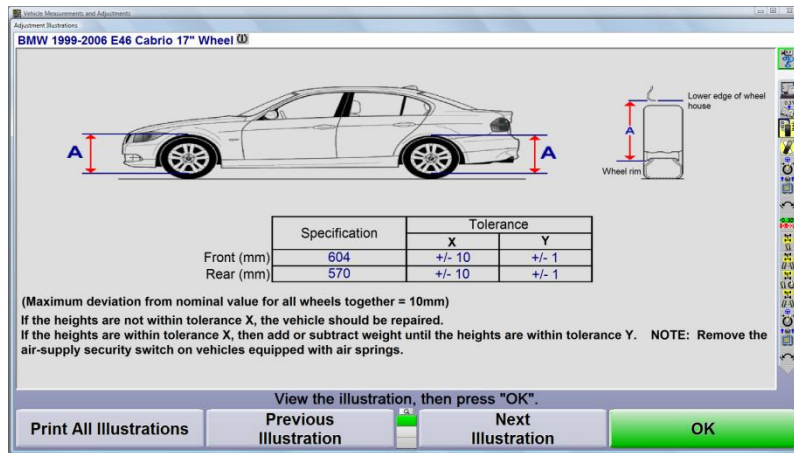


The following display will appear if the ride height values are out of range.

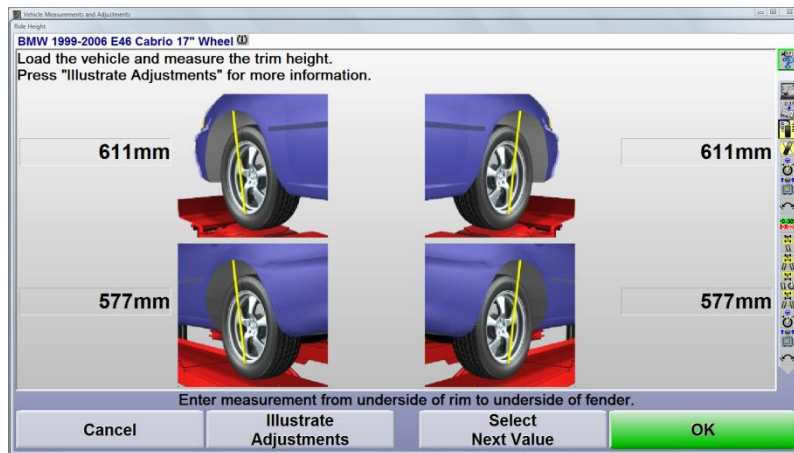


Press K4 "Continue" to view additional information.

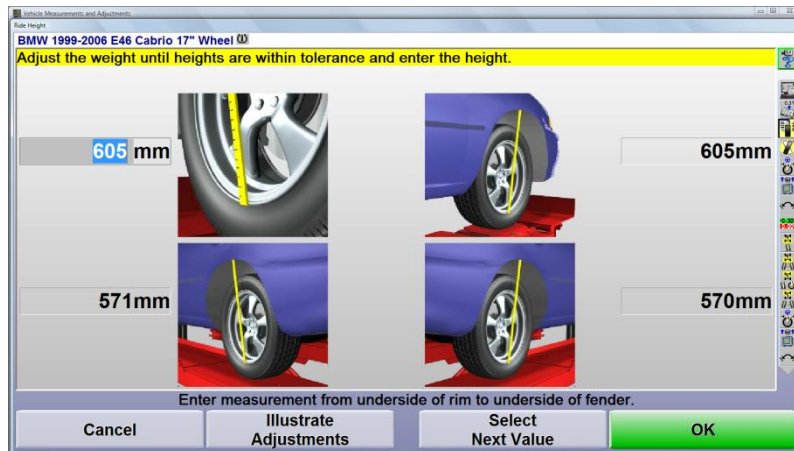




Add weight to the vehicle as illustrated and enter measured ride height.



If the ride height is within the limits of Tolerance "X", Add or remove weight to get within the Tolerance "Y" value.



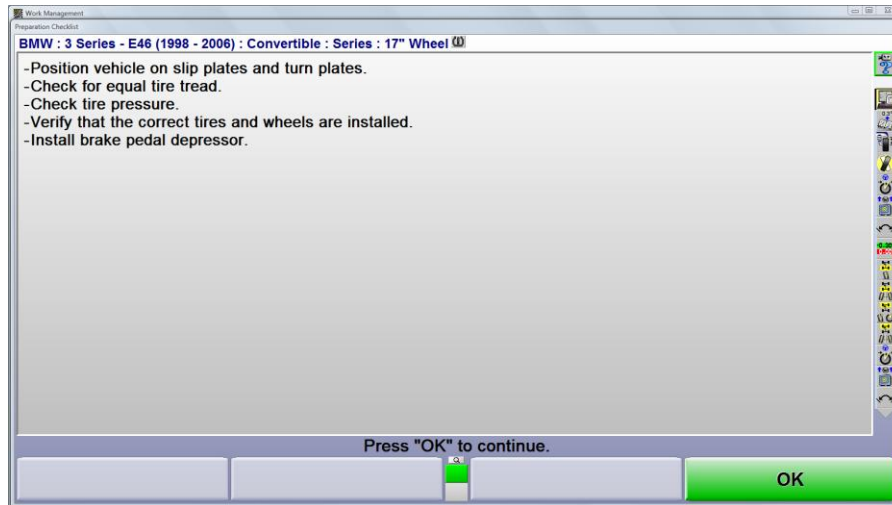
If the ride height is not with the limits of Tolerance "X", repair the vehicle.

Press K4 "OK" to continue

2.2 Measurements

Sensor Operation

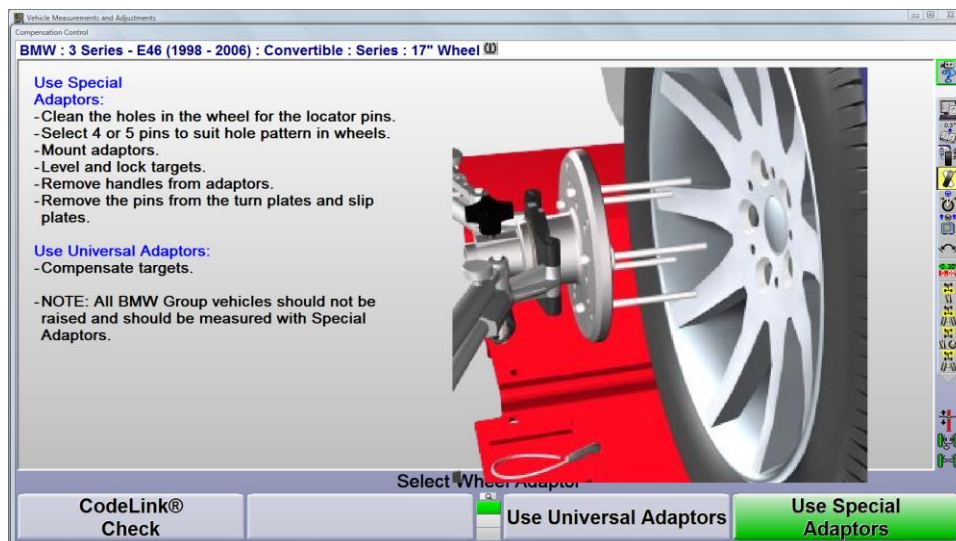
Place the vehicle in position for compensation by following the instructions.



The operator must choose a wheel adaptor type before proceeding with the alignment.

Special Adaptor

Compensation is not needed when using the special adaptor designed for BMW.



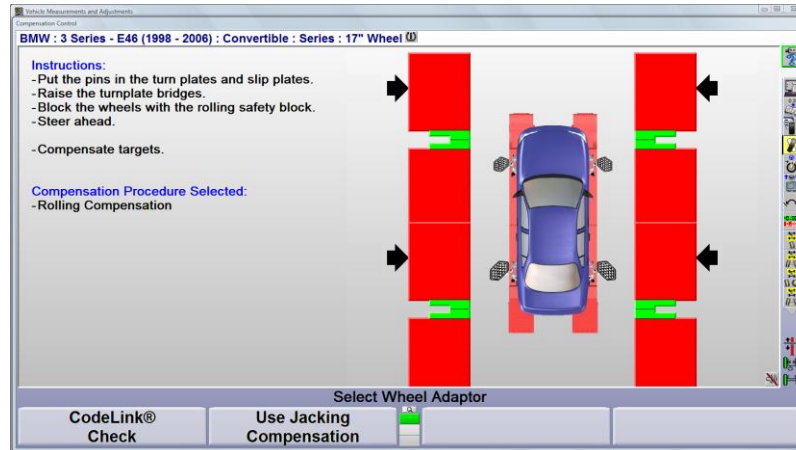
Universal Adaptors

If the universal adaptor is selected, then instructions pertaining to this adaptor are provided. The compensation option is displayed along with the vehicle plan view showing the status of the sensors.

Run-out compensation must be performed when using universal adaptors. Press "Continue" to proceed with the measurement process.

The lift rack should be level on the leveling legs or locks during the compensation process. The lock pins must be in place on the turnplates and rear slip plates.

Place the vehicle's transmission in neutral with the engine off.



Roll the vehicle rearward using the left rear tire until the bar graphs are green and the arrows are well within the green area of the bar graph. Hold the vehicle until the bar graphs change.

Roll the vehicle forward until the bar graphs are green and the front tires are centered on the front turnplates. Chock the rear wheels.

Install the brake pedal depressor.

Remove the pins from the front turnplate and rear slip plates.

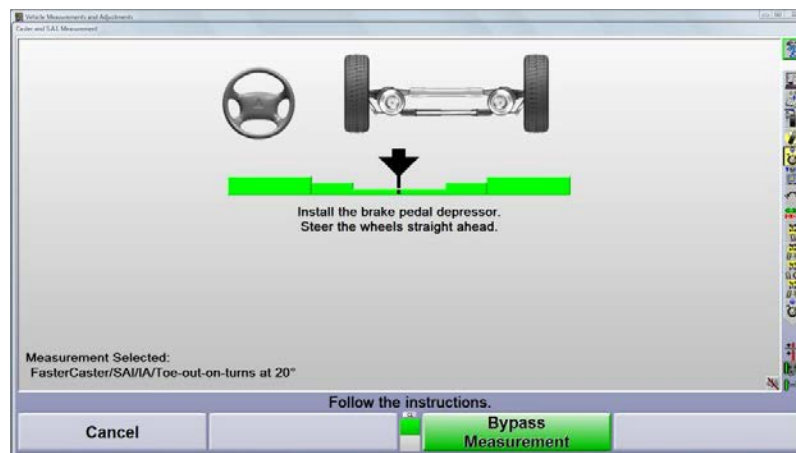
The vehicle's transmission may be placed in Park at this time.

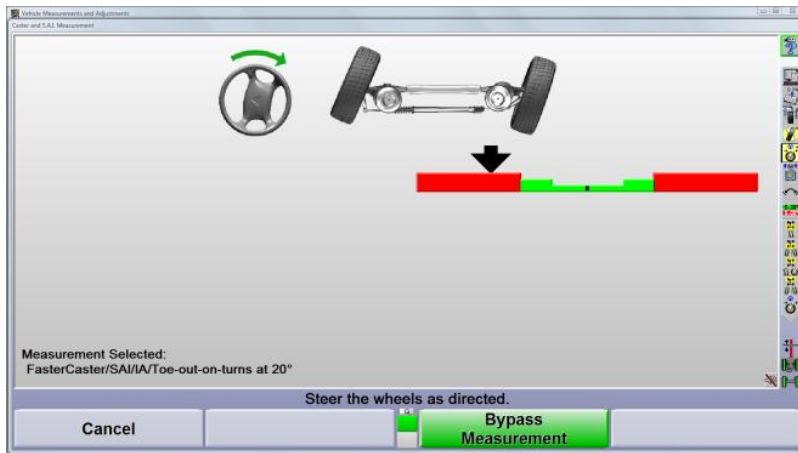
Do not disturb the level condition of the sensors. The sensors will remain locked the remainder of the alignment process or until unlock instructions are displayed.

Caster, S.A.I., Included Angle and Turning angle Measurements

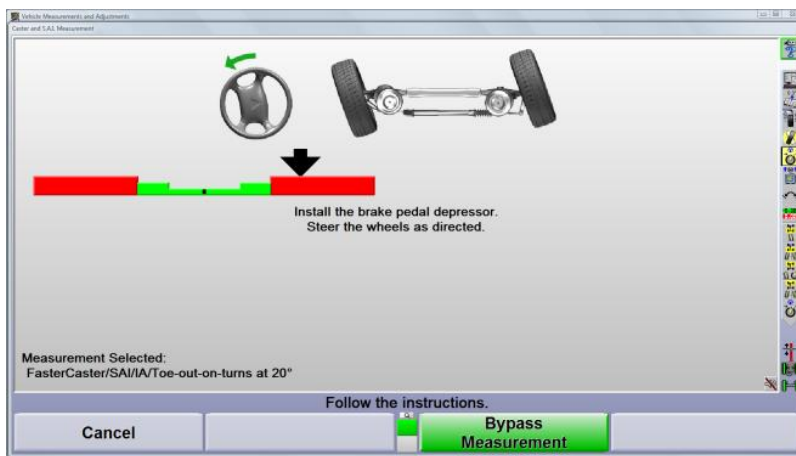
BMW's process requires Caster, SAI/IA and toe-out-on-turns at 20 degrees to be measured using a single process.

Follow the instructions given on the screen. The program will wait until all sensors are stable before automatically moving to the next screen. This is necessary because all "Before" measurements for the sensors are saved at this time.

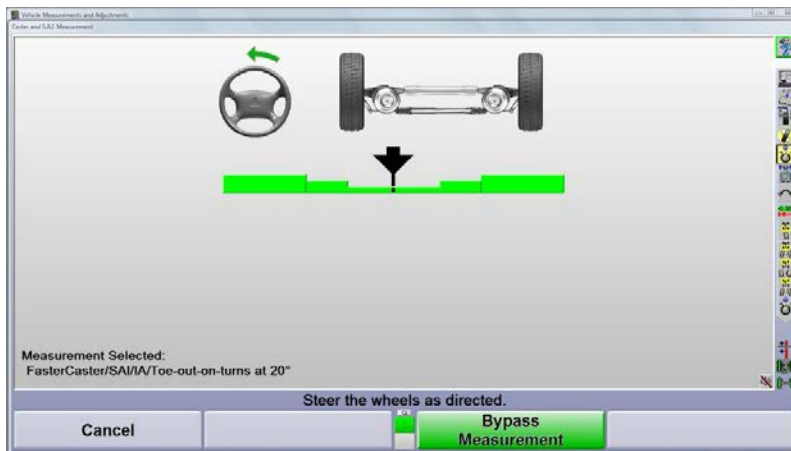




Steer to the left as directed until the arrow is in the lower valley of the graph. Hold the wheels still until the bar graph changes.



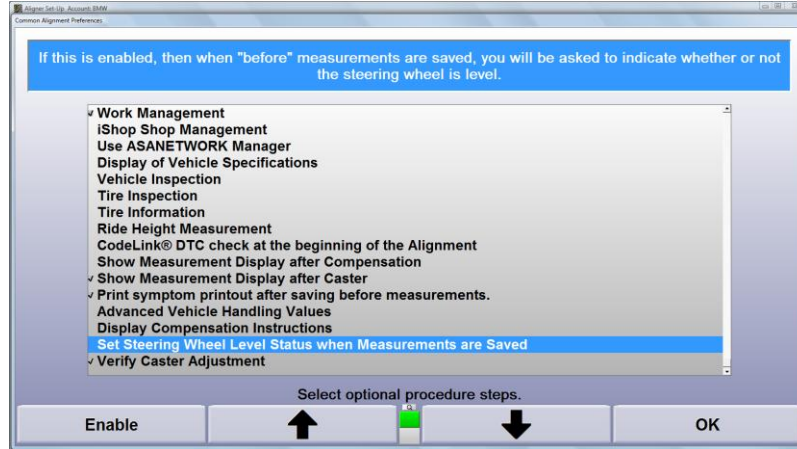
Steer to the right as directed until the arrow is in the lower valley of the graph. Hold the wheels still until the bar graph changes.



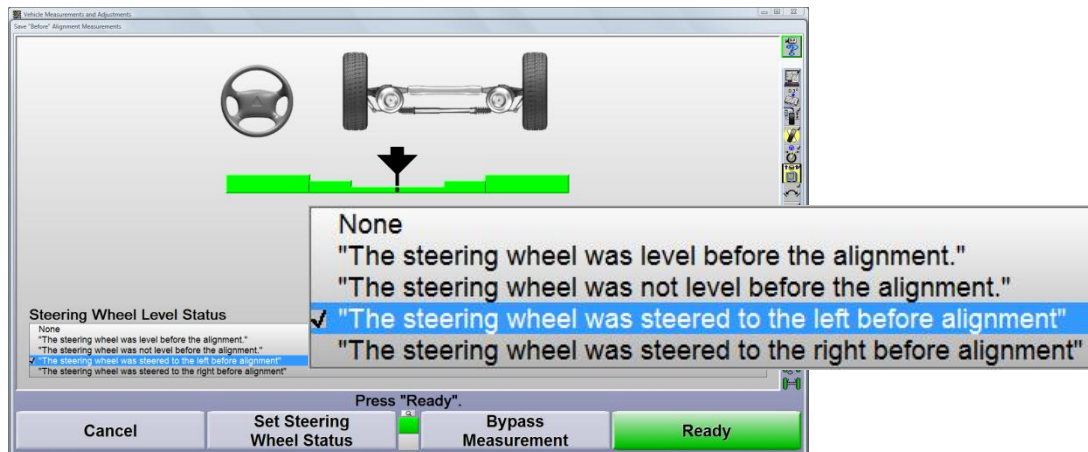
Steer back to the left until the arrow is centered in the bar graph. Hold steady until the screen changes.

Steering Wheel Status

A steering wheel status indicator may be used during the alignment if the option is turned on through the "Common Files" portion of WinAlign®'s setup program.



Initial steering wheel position may be recorded the initial primary angles have been measured.

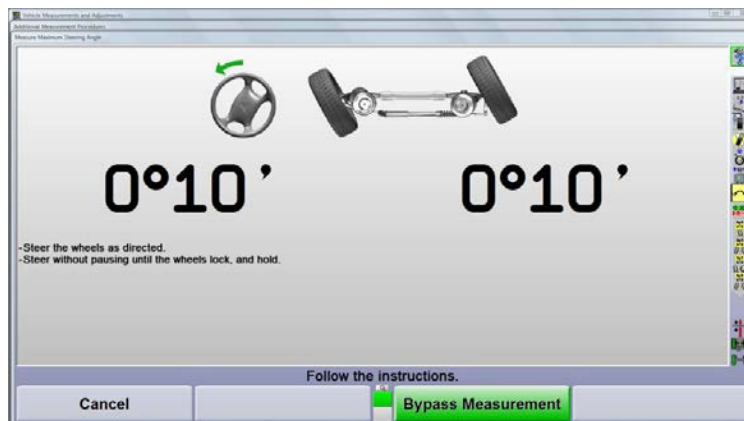


The example above shows a selection stating the steering was off to the left.

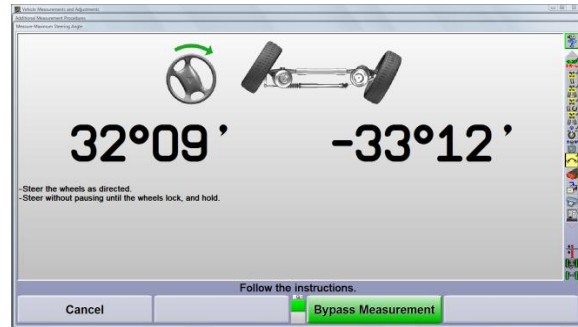
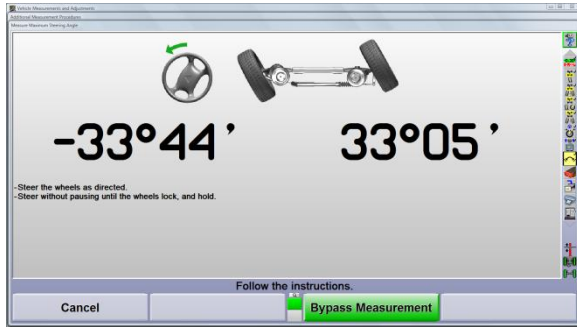
“Before” Measure Maximum Steering Angle

Maximum Steering Angle will be measured if the specification for the vehicle selected contains maximum steer angle value. Follow the instructions and then steer the wheels as directed.

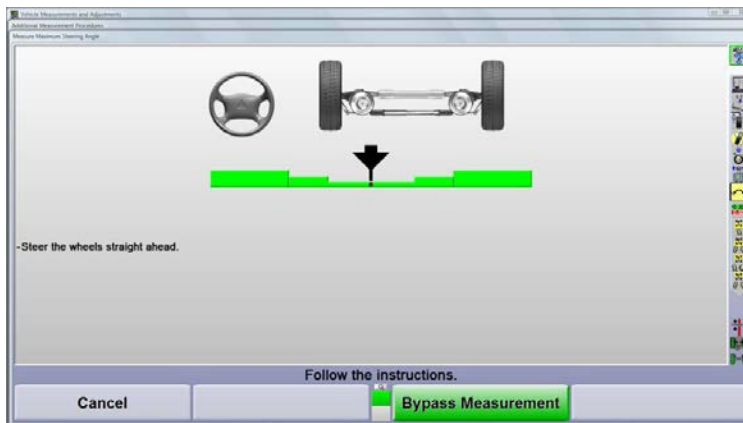
Conventional sensors should be unlocked for this measurement.



Steer the wheels as directed with a steady motion until maximum steer angle is achieved to the left. Hold the wheels until the display indicates to steer right.



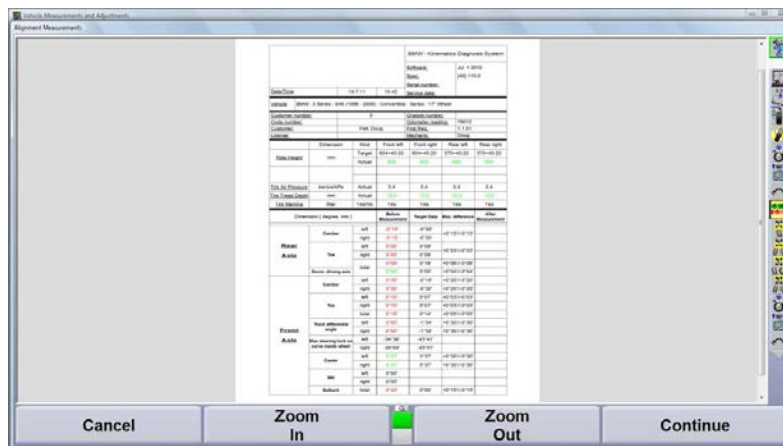
Repeat this process when steering to the right.



Return the wheels to the straight ahead position. The program will automatically bypass this procedure if the vehicle's specification does not contain a maximum steer angle value.

Alignment Measurements Printout

The 'Before' measurements screen will appear after all measurements are obtained.



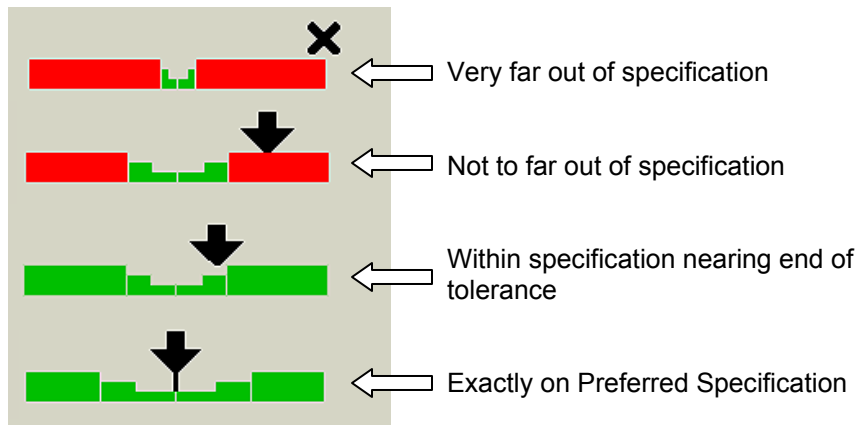
Screen scroll up or down, zoom in or out to see all the alignment data. Numbers shown in red are out of specifications, number in green are within acceptable limits.

Select "Print" from the second row of softkeys to print the exact screen as shown.

Select "Continue" to proceed with alignment adjustments.

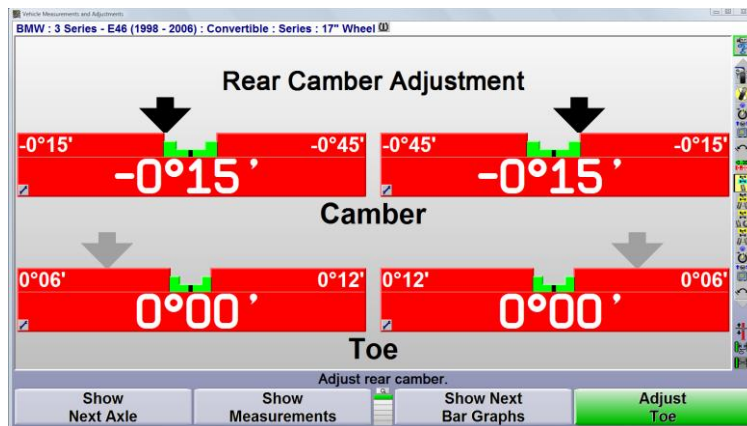
2.3 Adjustments

Bar graphs quickly indicate the position of the angle compared to specification.



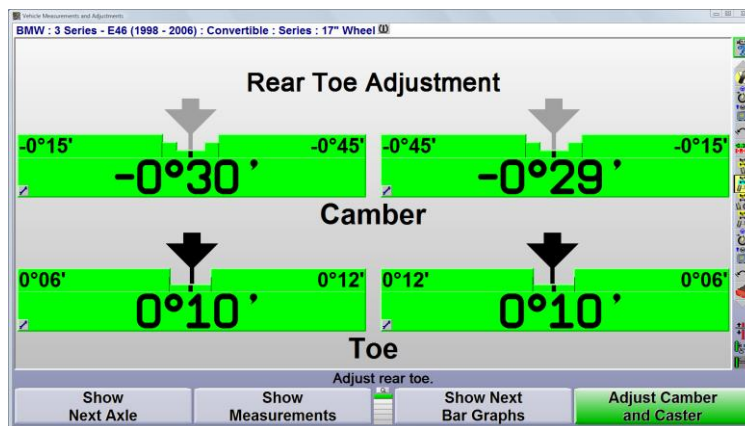
Rear Camber Adjustment

The arrows for rear toe are grayed-out indicating camber is being adjusted. A rear toe adjustment display will be displayed in the next step of the alignment process.



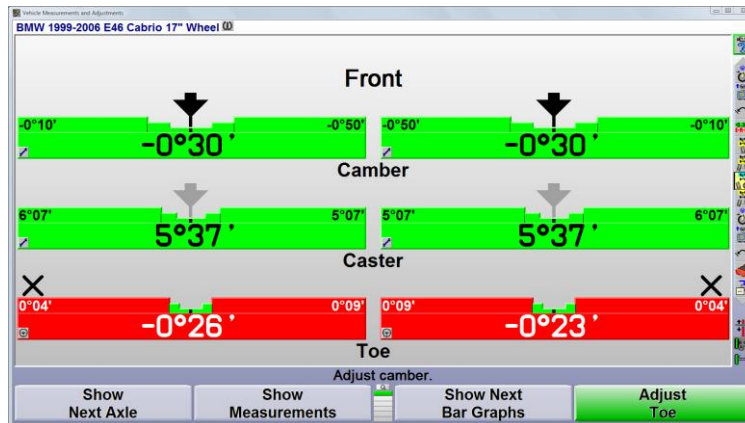
Rear Toe Adjustment

After camber has been successfully adjusted, select "Adjust Toe," to switch to the Adjust Rear Toe screen. While toe is being adjusted, arrows on the camber bar graphs will be grayed-out.



Front Camber and Caster Adjustment

Adjustments may be made to front camber and caster at this screen. Do not re-level conventional front sensors before adjusting front camber or caster.



Caster Bar Graph doesn't Match Measured Caster

Caster measurement values will change anytime the wheel rotates forward or rearward. WinAlign® is programmed to know the service brakes are locked and the only way a front wheel can rotate forward or rearward is for the tilt of the steering axis to change.

If the service brakes fail to hold the wheel locked, the values on the caster bar graph may change without the caster angle being changed.

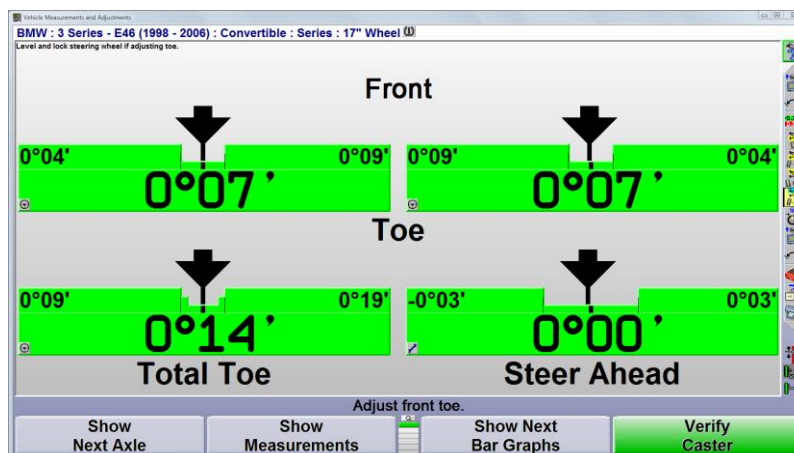
To reset the caster value, follow these steps.

Camera based sensors: Place the mouse pointer on the caster bar graph wrench icon and left click to obtain the context sensitive drop menu. Select "Match Caster Adjust to Caster Measurement" from the list. Press K4 "Match Caster."

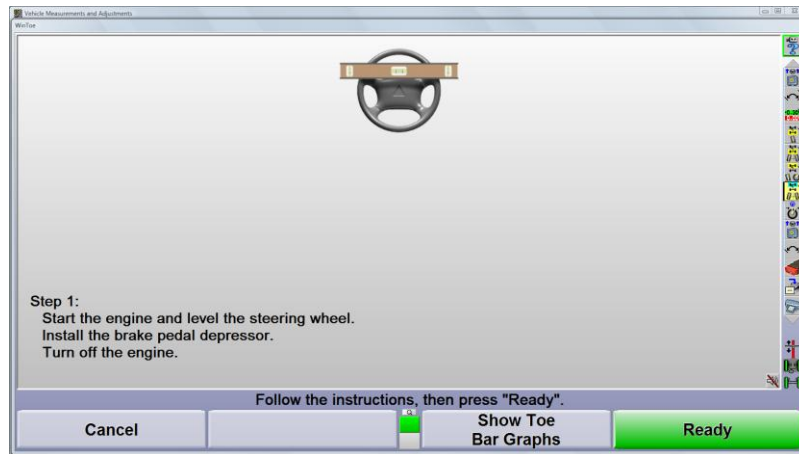
Conventional sensors: Adjust the level condition of the front sensor until the last measured caster value is displayed. Lock sensor securely.

Front Toe Adjustment

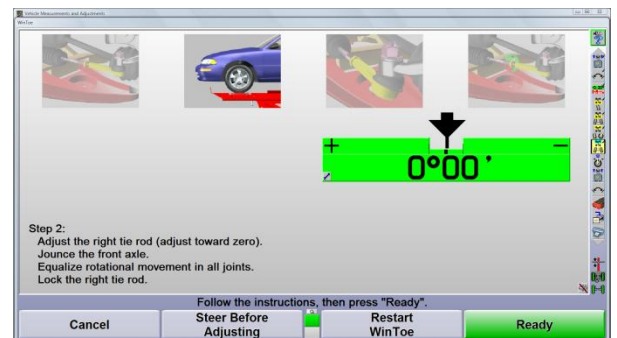
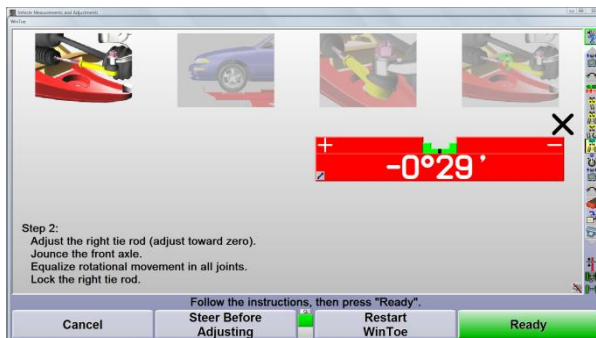
The front toe adjustment display includes the individual toe bar graphs, total toe graph, and Steer Ahead graph. Adjust the toe as necessary and select "Save After Measurements."



The WinToe® toe adjustment feature is available from the drop-down menu on the bar graphs, or by selecting "Make Additional Adjustments."

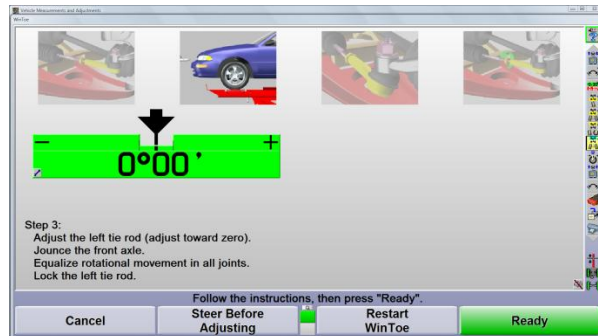
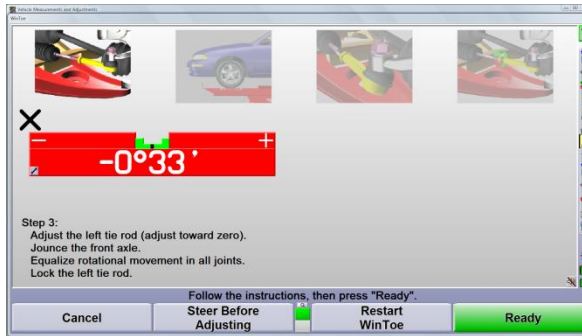


Always refer to the "Illustrate Adjustments" for information. Some models may require alignment of a mark on the steering shaft to mark on the gearbox cap. Follow the instructions on the initial WinToe adjustment screen.



1. Adjust right front toe until the bar graph value is near zero and the bar graph is green.
2. Jounce the vehicle
3. Repeat steps 1 and 2 until the bar graph remains green with a value close to zero after the vehicle is jounced
4. Pivot the outer tie rod and place it in the center of rotational movement
5. Tighten the jam nut
6. Press K4 "Ready"

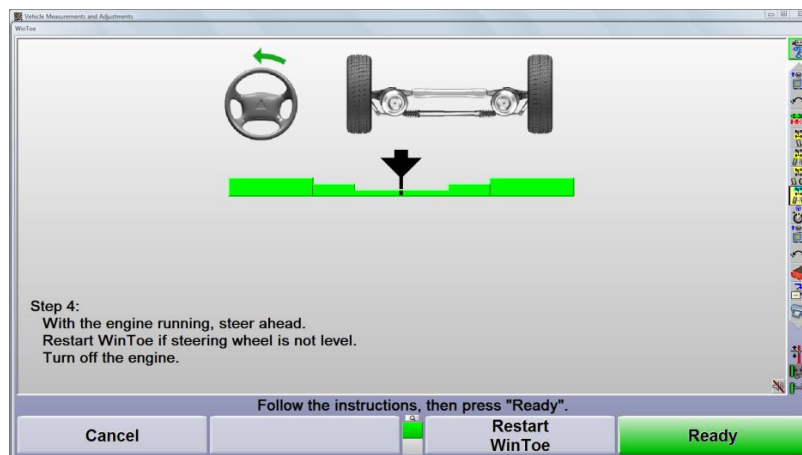
7. Repeat this process for the left tie rod assembly



8. Press K4 "Ready"

9. Follow the instructions on the screen

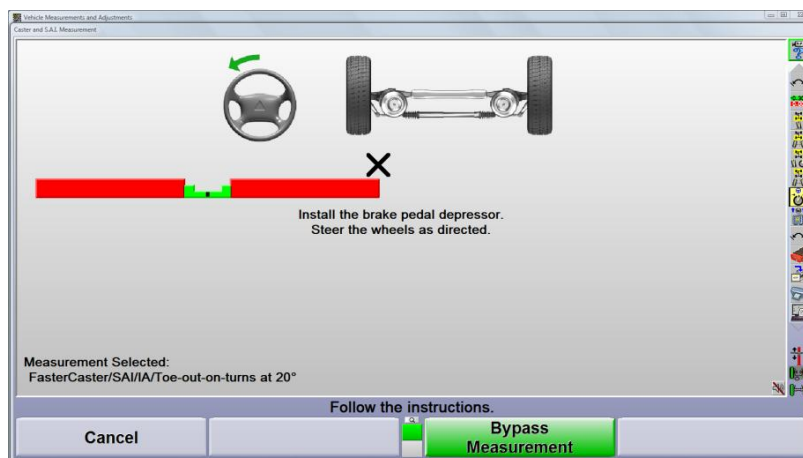
10. With the arrow centered, evaluate the steering wheel position



If the steering wheel position is acceptable, press K4 "Ready." If the steering wheel position is unacceptable, press K3 "Restart WinToe".

2.4 Completing the Alignment Process

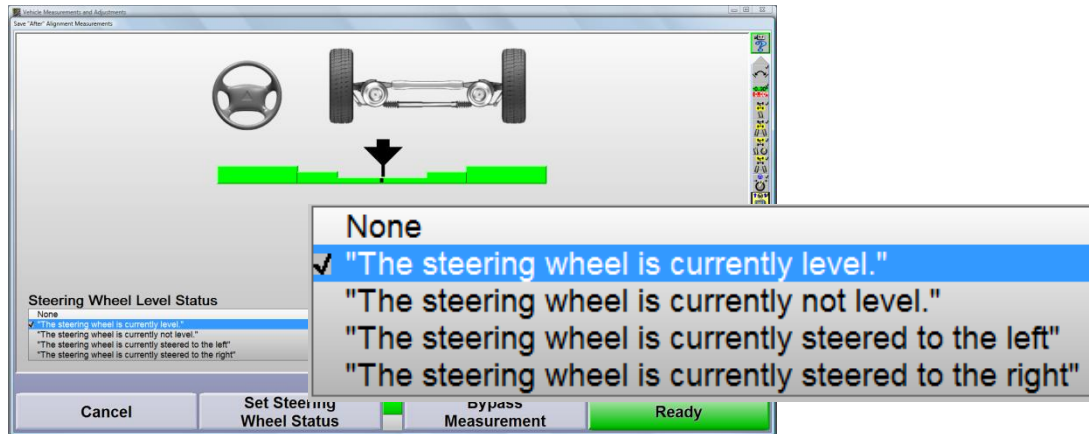
Second Caster Measurement



Measure caster/SAI/IA/Toe-out-on-turns at 20° again. This step should not be bypassed. Adjustments made to front camber and toe influence the SAI/IA and Toe-out-on-turn values.

Steering Wheel Status

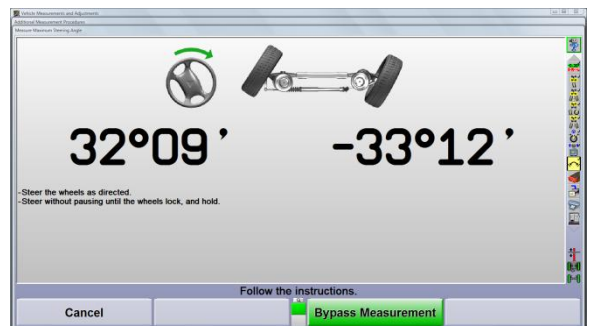
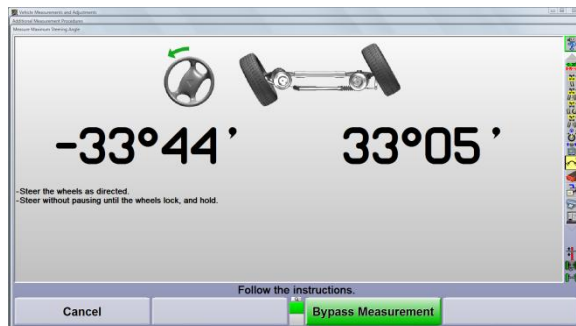
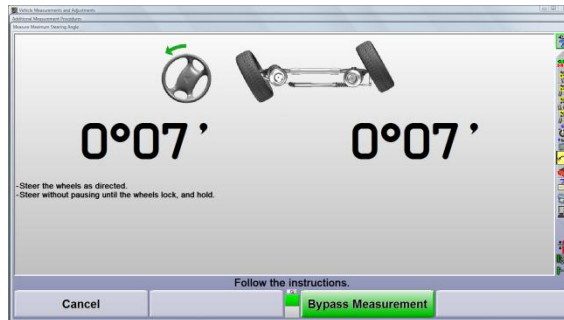
Select the steering wheel status now that all adjustments have been finished.



A note will be added to the printout the position the steering wheel was in before and after the alignment adjustments were made. Select K4 "Ready" to continue with the procedure.

Measure Maximum Steer Angle (Re-measure)

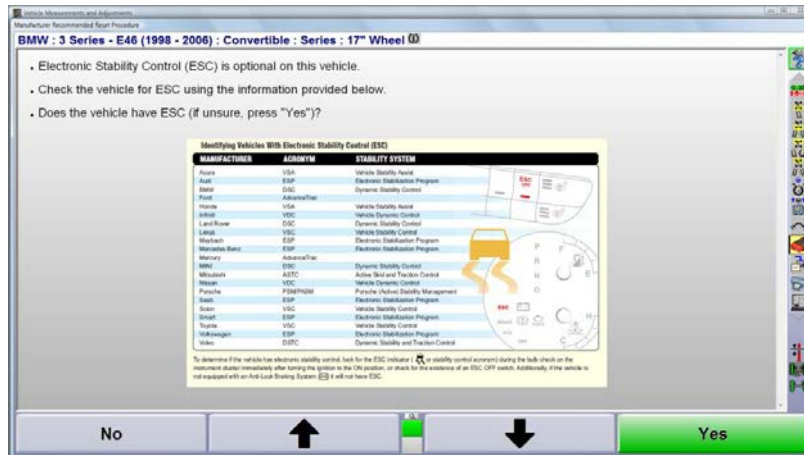
The maximum steer angle measurement is also affected by adjustments to front toe angles. If a maximum steering angle specification is available, the program will automatically offer a maximum steer angle measurement. Proceed as instructed on the screen.



The final maximum steer measurement is made at this screen.

| | | | | | |
|---|-------|---------|---------|--|---------|
| Max steering lock on curve inside wheel | left | -34°36' | -43°41' | | -33°44' |
| | right | -34°04' | -43°41' | | -33°12' |

Does the vehicle have ESC (if unsure, press "Yes")?



Selecting "Yes" will instruct the WinAlign® system to use Hunter's CodeLink tool.



It is vital to follow the sequence of events exactly as the display indicates.

The "Click here for more information" hyperlink will help you find the connector.



Final Measurements Overview

Measurements that have been saved as “After” measurements are shown here. This detailed page illustrates all the measurements and adjustments required, plus any customer and vehicle information entered on the work order. Notice at the bottom of the screen the notes regarding steering wheel position.

BMW - Kinematic Diagnostic System
 Software: Jul 1 2010
 Date: 06/11/10
 Serial: 0001110.0

Vehicle: BMW 3 Series - E46 (1998 - 2006) - Convertible Series 17 Wheel

| Dimension | Unit | Front Left | Front Right | Rear Left | Rear Right |
|----------------|------|-----------------|-------------|-----------|------------|
| Wheel offset | mm | Target: 65+0-20 | 65+0-20 | 55+0-20 | 55+0-20 |
| Actual | | 65 | 65 | 55 | 55 |
| Toe (at 20mm) | mm | Actual: 0.0 | 0.0 | 0.0 | 0.0 |
| Toe (at 100mm) | mm | Actual: 0.0 | 0.0 | 0.0 | 0.0 |
| Toe (at 200mm) | mm | Actual: 0.0 | 0.0 | 0.0 | 0.0 |
| Toe (at 300mm) | mm | Actual: 0.0 | 0.0 | 0.0 | 0.0 |

| Dimension [degree, min] | Before Measurement | Target Data | Max. difference | After Measurement | |
|---------------------------|---|-----------------|-----------------|-------------------|---------|
| Rear Axle | Camber | left: 0°15' | -1°37' | +0°15'// -0°15' | -1°34' |
| | right: 0°15' | -1°47' | +0°15'// -0°15' | -1°44' | |
| | Toe | left: 0°00' | 0°08' | +0°03'// -0°03' | 0°08' |
| | right: 0°00' | 0°08' | +0°03'// -0°03' | 0°08' | |
| | total: 0°00' | 0°15' | +0°06'// -0°06' | 0°16' | |
| | Geom. driving axis | total: 0°00' | 0°00' | +0°04'// -0°04' | 0°00' |
| Front Axle | Camber | left: 0°30' | -0°30' | +0°20'// -0°20' | -2°14' |
| | right: 0°30' | -0°30' | +0°20'// -0°20' | -0°32' | |
| | Toe | left: -3°54' | 0°07' | +0°03'// -0°03' | 0°08' |
| | right: -3°54' | 0°07' | +0°03'// -0°03' | 0°07' | |
| | total: -7°48' | 0°13' | +0°05'// -0°05' | 0°14' | |
| | Track differential angle | left: 0°00' | -1°34' | +0°30'// -0°30' | 0°00' |
| | right: 0°00' | -1°34' | +0°30'// -0°30' | 0°00' | |
| | Max steering lock on curve inside wheel | left: -43°26' | -43°41' | +0°15'// -0°15' | -44°43' |
| | right: -43°29' | -43°41' | +0°15'// -0°15' | -44°28' | |
| | Caster | left: 5°37' | 5°37' | +0°30'// -0°30' | 5°37' |
| | right: 5°37' | 5°37' | +0°30'// -0°30' | 5°37' | |
| | SAI | left: 0°00' | 0°00' | +0°00'// -0°00' | 0°00' |
| right: 0°00' | 0°00' | +0°00'// -0°00' | 0°00' | | |
| Setback | total: 0°42' | 0°00' | +0°15'// -0°15' | 0°42' | |

The steering wheel was not level before the alignment. Toe adjustments are required.
 The steering wheel is currently level.

Saving Final Work Order

Press “Save Current Work Order” to store all data pertaining to this job.

Alignment Printouts

Press “Print “ to generate an alignment summary using the BMW printout format.

| Dimension [degree, min] | Measurement | Target Data | Max. difference | After Measurement | |
|---------------------------|---|-----------------|-----------------|-------------------|---------|
| Rear Axle | Camber | left: 0°15' | -1°37' | +0°15'// -0°15' | -1°34' |
| | right: 0°15' | -1°47' | +0°15'// -0°15' | -1°44' | |
| | Toe | left: 0°00' | 0°08' | +0°03'// -0°03' | 0°08' |
| | right: 0°00' | 0°08' | +0°03'// -0°03' | 0°08' | |
| | total: 0°00' | 0°15' | +0°06'// -0°06' | 0°16' | |
| | Geom. driving axis | total: 0°00' | 0°00' | +0°04'// -0°04' | 0°00' |
| Front Axle | Camber | left: 0°30' | -0°30' | +0°20'// -0°20' | -2°14' |
| | right: 0°30' | -0°30' | +0°20'// -0°20' | -0°32' | |
| | Toe | left: -3°54' | 0°07' | +0°03'// -0°03' | 0°08' |
| | right: -3°54' | 0°07' | +0°03'// -0°03' | 0°07' | |
| | total: -7°48' | 0°13' | +0°05'// -0°05' | 0°14' | |
| | Track differential angle | left: 0°00' | -1°34' | +0°30'// -0°30' | 0°00' |
| | right: 0°00' | -1°34' | +0°30'// -0°30' | 0°00' | |
| | Max steering lock on curve inside wheel | left: -43°26' | -43°41' | +0°15'// -0°15' | -44°43' |
| | right: -43°29' | -43°41' | +0°15'// -0°15' | -44°28' | |
| | Caster | left: 5°37' | 5°37' | +0°30'// -0°30' | 5°37' |
| | right: 5°37' | 5°37' | +0°30'// -0°30' | 5°37' | |
| | SAI | left: 0°00' | 0°00' | +0°00'// -0°00' | 0°00' |
| right: 0°00' | 0°00' | +0°00'// -0°00' | 0°00' | | |
| Setback | total: 0°42' | 0°00' | +0°15'// -0°15' | 0°42' | |

The steering wheel was not level before the alignment. Toe adjustments are required.
 The steering wheel is currently level.

BMW-Kinematics Diagnosis System Printout

| | | | | | | | |
|---------------------------|--|--------|-----------------------------------|----------------|-----------------|-------------------|---------|
| | | | BMW - Kinematics Diagnosis System | | | | |
| | | | Software: | Jul 1 2010 | | | |
| | | | Spec: | {40} 110.0 | | | |
| | | | Serial number: | | | | |
| Date/Time | 25.7.11 | 9:05 | Service date: | 25.7.11 | | | |
| Vehicle | BMW 1999-2006 E46 Cabrio 17" Wheel | | | | | | |
| Customer number: | 5 | | Chassis number: | | | | |
| Code number: | | | Odometer reading: | 78056 | | | |
| Customer: | Felt, Doug | | First Reg. | 1.1.01 | | | |
| License: | ok-fine | | Mechanic: | doug | | | |
| | Dimension | Kind | Front left | Front right | Rear left | Rear right | |
| Ride Height | mm | Target | 604+40-20 | 604+40-20 | 570+40-20 | 570+40-20 | |
| | | Actual | 600 | 600 | 570 | 570 | |
| | | | | | | | |
| Tire Air Pressure | bar/psi/kPa | Actual | 2,4 | 2,4 | 2,4 | 2,4 | |
| Tire Tread Depth | mm | Actual | 10,0 | 10,0 | 9,0 | 9,0 | |
| Tire Marking | Star | Yes/No | Yes | Yes | Yes | Yes | |
| Dimension [degree, min] | | | Before Measurement | Target Data | Max. difference | After Measurement | |
| Rear Axle | Camber | left | -0°15' | -1°36' | +0°15'//-0°15' | -1°34' | |
| | | right | -0°15' | -1°36' | | -1°34' | |
| | Toe | left | 0°00' | 0°08' | +0°03'//-0°03' | 0°08' | |
| | | right | 0°00' | 0°08' | | 0°07' | |
| | | total | 0°00' | 0°16' | | 0°15' | |
| Geom. driving axis | | 0°00' | 0°00' | +0°04'//-0°04' | 0°00' | | |
| Front Axle | Camber | left | 0°30' | -0°30' | +0°20'//-0°20' | -0°30' | |
| | | right | 0°30' | -0°30' | +0°20'//-0°20' | -0°32' | |
| | Toe | left | 0°10' | 0°07' | +0°03'//-0°03' | 0°07' | |
| | | right | 0°10' | 0°07' | +0°03'//-0°03' | 0°07' | |
| | | total | 0°19' | 0°13' | +0°05'//-0°05' | 0°14' | |
| | Track differential angle | left | 0°00' | -1°34' | +0°30'//-0°30' | 0°00' | |
| | | right | 0°00' | -1°34' | +0°30'//-0°30' | 0°00' | |
| | Max steering lock on curve inside wheel | left | | -33°36' | -43°41' | | -43°22' |
| | | right | | -32°34' | -43°41' | | -43°44' |
| | Caster | left | | 5°37' | 5°37' | +0°30'//-0°30' | 5°37' |
| | | right | | 5°37' | 5°37' | +0°30'//-0°30' | 5°37' |
| | SAI | left | | 0°00' | | | 1°00' |
| right | | | 0°00' | | | 1°02' | |
| Setback | total | | 0°42' | 0°00' | +0°15'//-0°15' | 0°42' | |

Print Vehicle Printout

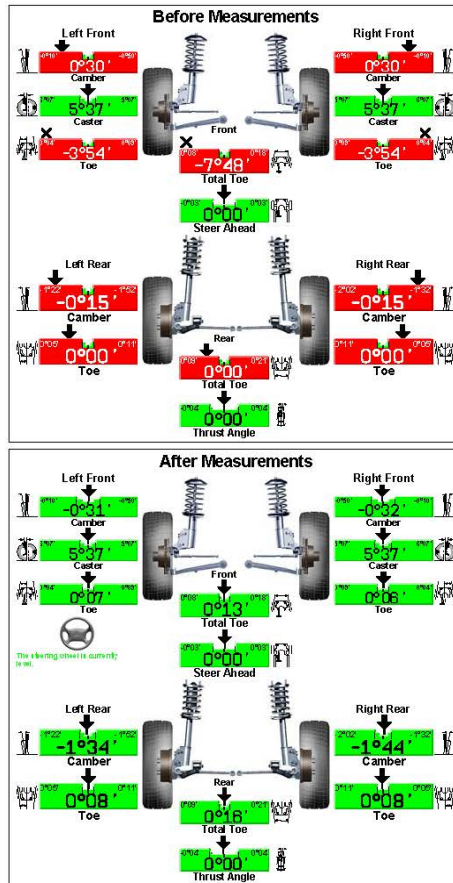
Select "Print Vehicle" to print specific measurements shown in the WinAlign® format. The following example shows both "before" and "after" results.

VIN: WBABS53461JU81878
Work Order: R000007
Mileage: 89321
License: ok-fine
First Reg. 1.1.01
Technician: Bob Jones
First Name: John
Last Name: Smith
Company: HEC
Street: 11250 Hunter Dr
City: Bridgeton
State: MO
ZIP: 63044
Home Tel.: 314-504-9037
Work Tel.: 314-716-0482
Customer Number:
Date 25.7.11 9:28



WBABS53461JU81878

BMW 1999-2006 E46 Cabrio 17" Wheel



- The steering wheel was not level before the alignment. Toe adjustments are required.
- One or more values are not within specification. Tire wear, handling and safety problems may result.

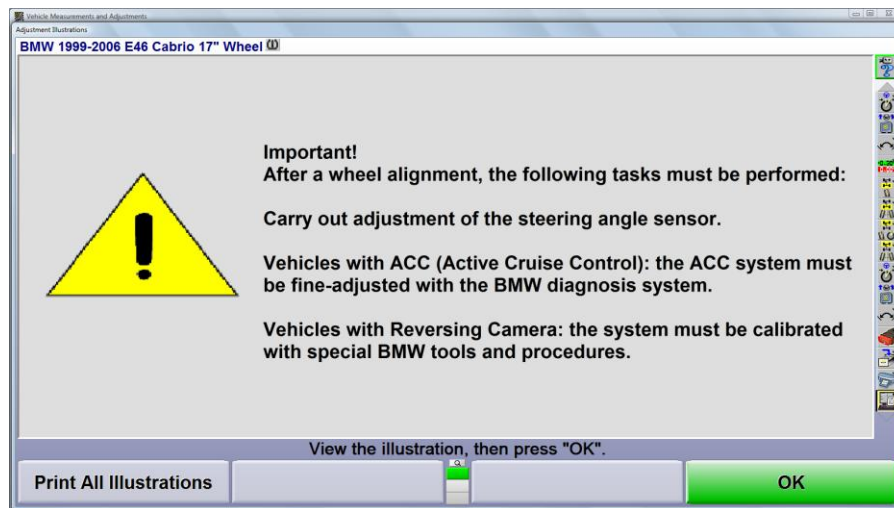
Conclude the alignment process by selecting the "Reset" softkey.

Additional Alignment Steps

During Recall Specifications the info icon  will appear next to vehicles requiring special procedures. Click on the icon to display a detailed illustration or description.

3.1 Adaptive Cruise Control

Vehicles with ACC (Active Cruise Control), AFS (Active Front Steering), and DSC (Dynamic Stability Control) may require additional measurements, adjustments, and/or special tools to make the adjustments.




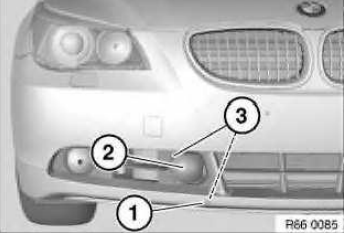
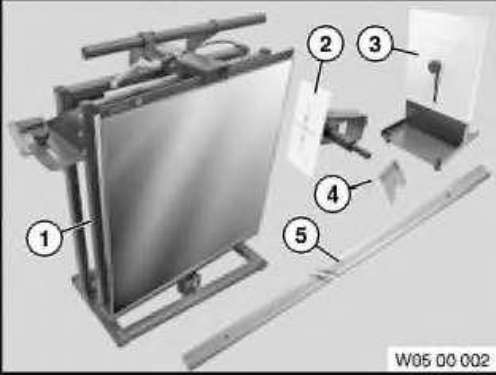
BMW's Active Cruise Control (ACC) uses a three-beam radar sensor to monitor the road ahead of the car and to adjust the speed of the vehicle by slowing the engine or by gently applying the brakes.

The system uses a three-beam radar sensor. This electronic eye monitors the road ahead of the car - up to 120 meters. The system is able to recognize whether a particular vehicle is occupying the lane ahead. ACC adjusts the car's speed to the changing flow of the surrounding traffic.



Alignment of the BMW ACC System requires a vehicle specific BMW scan tool and special ACC adjustment tool (BMW part# 81-10-0-021-292).

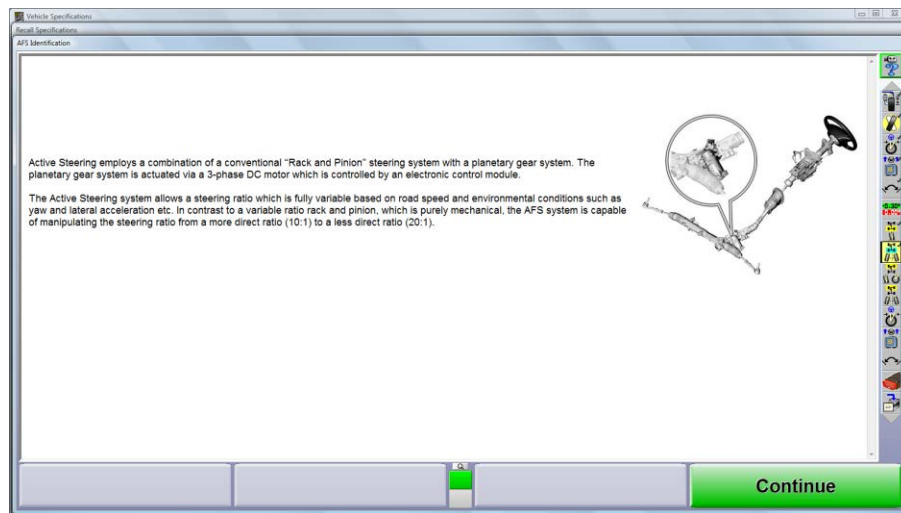
BMW TIS - 66 31 001 Adjusting ACC sensor

| | | |
|--|--|--|
| 66 31 001 | Adjusting ACC sensor | |
|  | <p>Special tools required:</p> <ul style="list-style-type: none"> · 36 1 100 · 36 1 130 | |
|  | <p>Lever out cap ①. Carry out adjustment of ACC sensor ② with special tool 36 1 130 by means of adjusting screws ③.</p> | |
|  | <p>Special tool required: Active Cruise Control ACC adjusting device, complete. Order number: 81 10 0 021 292 Consisting of:</p> <ol style="list-style-type: none"> 1. Mirror, complete 2. Wheel laser 3. Slotted diaphragm 4. Control bracket (for initial installation of rail) 5. Rail 6. Setup and operating instructions (not shown) <p>Note: A holder which is not included in the scope of delivery is required to support the wheel laser. Use either the quick-action clamp from the existing KDS or ACC wheel holder (36 1 100).</p> | |
| | <p>Note: Follow instructions for ACC adjusting device .</p> | |
| | <p>Note: To adjust the ACC sensor, connect the BMW diagnosis system and fit the ACC adjusting device. Select ACC system in diagnosis. Start test module "ACC adjustment" (service functions) and proceed in accordance with instructions. Handle ACC adjusting device in accordance with mounting and operating instructions provided with device.</p> | |
| | <p>Note: Further information on the ACC adjusting device can be found in the BMW Workshop Equipment and Planning Documentation</p> | |

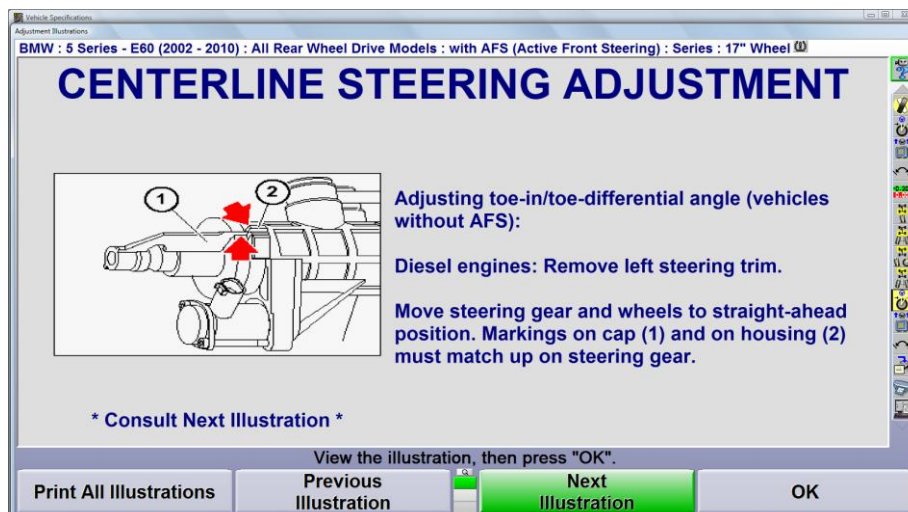
3.2 Active Front Steering

AFS varies the steering ratio electronically relative to the style and speed of driving. Under low and medium speeds, with normal road conditions, the steering requires less steering effort. At high speeds the steering becomes less direct offering improved directional stability. When cornering at high speeds, or when undertaking sudden movements, the steering stiffens up by monitoring increases in the yaw rate.

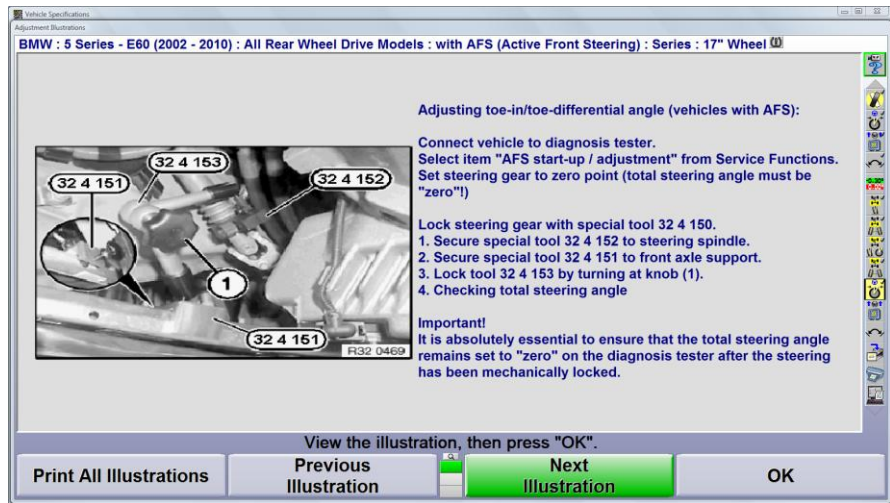
AFS works in conjunction with Dynamic Stability Control (DSC) by monitoring the yaw rate and changing the steering angle accordingly. This reduces the number of DSC interventions, providing more control to the driver and increased comfort for the passengers.



The markings on the steering shaft cap and housing must be aligned before front toe adjustments are performed.



These marks must stay aligned during the toe adjustment process.

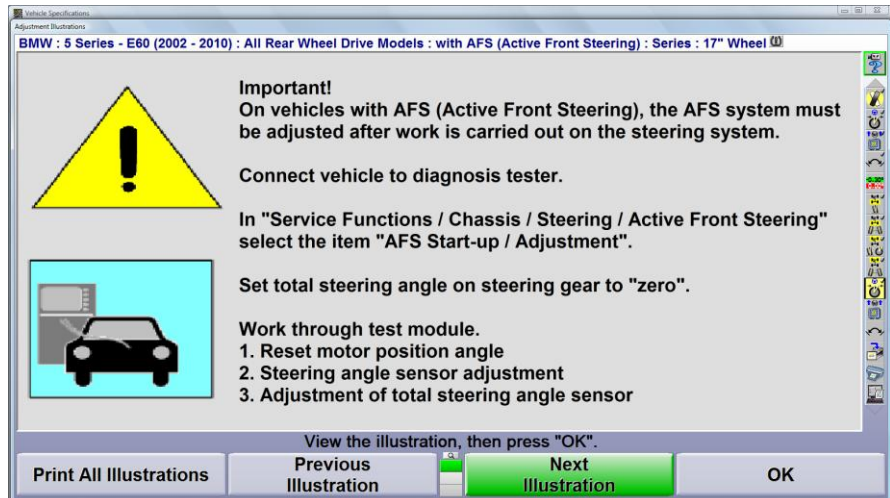


A special tool assembly (32-4-150) is used to hold the marks together.

"IMPORTANT: It is absolutely essential to ensure that the total steering angle remains set to zero on the diagnostic tester after the steering has been mechanically locked".

Proceed with the alignment process. The alignment procedure will inform the technician when the tool should be removed.

If further instructions are required, such as resetting the steering gear, these instructions will also be displayed at the appropriate point in the procedure.



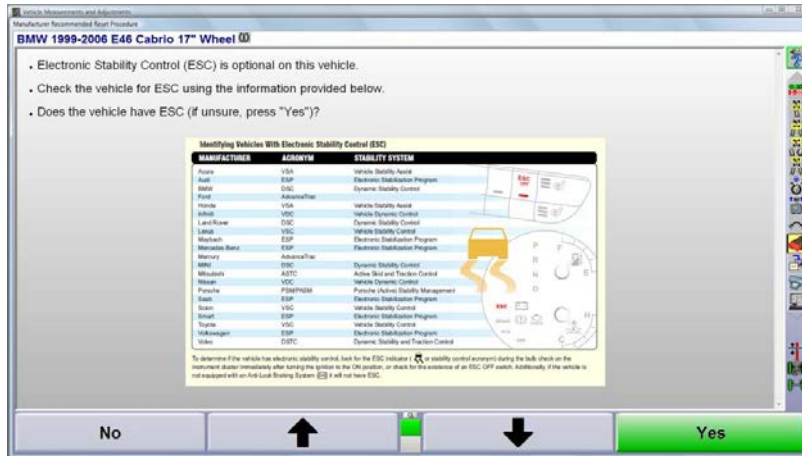
Final measurements will display after all special procedures are completed.

3.3 Dynamic Stability Control (DSC)

BMW's Dynamic Stability Control is a system designed to help keep the vehicle in control. The system gathers information from sensors monitoring wheel rotation, steering angle, lateral forces, pressure and yaw (spin).

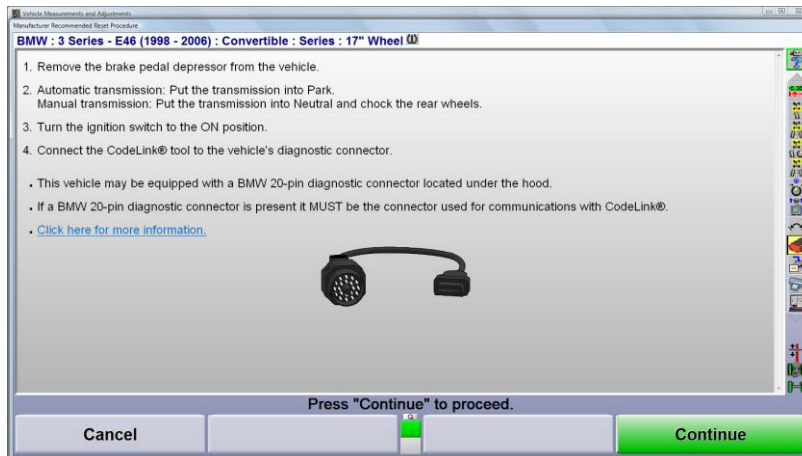
Wheel alignment may affect the calibration of the steering angle sensor. The only way to know that the DSC system is working with properly calibrated sensors is to connect the vehicle's computer system and check.

WinAlign® will display a message screen indicating that the vehicle may be equipped with DSC and in need of a verification procedure at the end of the alignment process.



The icon for Hunter's CodeLink device will appear in the procedure bar if CodeLink is part of the alignment system.

The following display will appear at the correct place in the alignment procedure if CodeLink is available.



Follow the instructions line-by-line and the procedure will be complete in a short period of time.

Program Details

4.1 Work Management

Using the Work Management program provides the following advantages:

1. Storage of customer information for later recall
2. Storage of customer's vehicle information for later recall
3. The ability to store more than one vehicle per customer
4. Storage of "Before" and "After" wheel alignment measurements
5. Record of customers tire pressure and tread depth
6. Record of factory or non-factory tire
7. Ability to recall work orders electronically

Vehicle identification includes the following:

| | | | |
|-------------|----------------------|-------------|--------------------------------------|
| VIN: | <input type="text"/> | Work Order: | <input type="text" value="R000001"/> |
| Mileage: | <input type="text"/> | License: | <input type="text"/> |
| First Reg.: | <input type="text"/> | Technician: | <input type="text"/> |
| Chassis No: | <input type="text"/> | Code No: | <input type="text"/> |

The Work Management screen also contains tire pressure, tread depth, and whether or not the tires are factory equipment.

| | Left Front | Right Front | Left Rear | Right Rear |
|------------------|--------------------------|--------------------------|--------------------------|--------------------------|
| Tire Pressure | <input type="text"/> | <input type="text"/> | <input type="text"/> | <input type="text"/> |
| Tire Tread Depth | <input type="text"/> mm | <input type="text"/> mm | <input type="text"/> mm | <input type="text"/> mm |
| Factory Tires: | <input type="checkbox"/> | <input type="checkbox"/> | <input type="checkbox"/> | <input type="checkbox"/> |

The dark grey areas indicate mandatory information. This usually includes:

- VIN #, Work order number, Mileage
- Technician performing the alignment
- Last and First name of customer
- Customer or Company Address
- Work and Home Phone number

The cursor indicates the position where a letter or number will appear.

Press **Enter** or **Tab** to advance to the next field. Press **Shift** and **Tab** to back up to the previous field. The mouse may be used to move between fields.

Press the **Backspace** key to delete the last character entered.

Press the right or left cursor arrow key to move the cursor.

Press **Del** to remove the character to the right of the cursor.

To insert a character in the middle of a word, move the cursor to the character before the position and press the character to be inserted.

The following error will appear, if a mandatory field is left blank.

Saving Current Work Order

Press "Work Management" on any primary screen to display the "Work Management" primary screen.

Press "Save Current Work Order." The work order with its associated customer and vehicle identification will be stored on the hard drive.

The "Save Current Work Order" softkey will also appear at the end of the alignment measurement procedure and on the "Print" screen.

Recalling a Work Order for Review or Print

Start on the Work Management screen.

1. Select the "List Work Order" softkey

Work Management
Edit Work Order
BMW : 5 Series - E60 (2002 - 2010) : All Rear Wheel Drive Models : with AFS (Active Front Steering) : Series : 17" Wheel

VIN: _____ Work Order: R000008
Mileage: _____ License: _____
First Reg: _____ Technician: _____
Chassis No: _____ Code No: _____
First Name: _____ Last Name: _____
Company: _____ Street: _____
City: _____ State: _____
ZIP: _____ Home Tel: _____
Work Tel: _____ Customer Number: 8

Tire Pressure Left Front Right Front Left Rear Right Rear
Tire Tread Depth BAR BAR BAR BAR
Factory Tires mm mm mm mm

Edit work order, then press "OK".
Cancel Recall Specifications List Work Orders OK

2. Use the search function to find the correct work order / customer
3. Highlight the correct work order / customer
4. Expose all the softkeys by clicking on the magnifying glass between the K2 and K3 keys
5. Select "Show Before", "Show After", or print the alignment

Work Management
Work Order List

Taylor, Bill R000001
1146 N. Hill 3.12.08.8.01
8511 Baldwin XC-862
PH836-447-8965 VIN:11111111111111111111
10 Nissan Altima Sedan 21560R16

Showing the "current" measurements of the reference job.

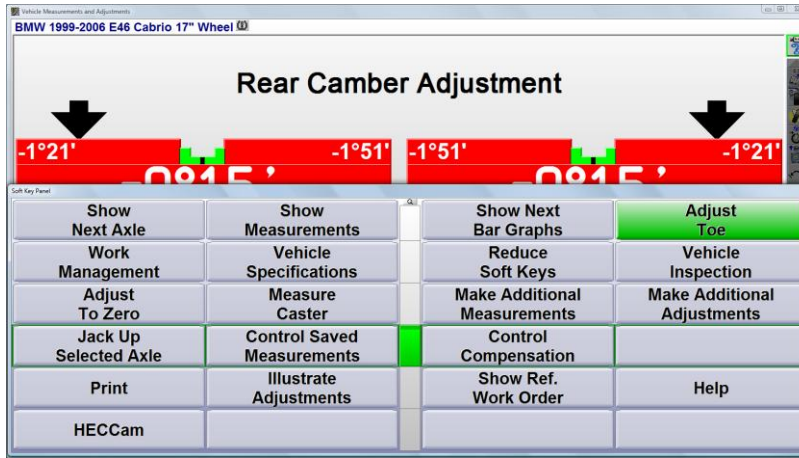
Front
Camber -0.80° -0.92°
Cross Camber 0.90° 0.11°
Caster 4.90° 4.90°
Cross Caster 0.00°

VIN: _____ Model: _____ Last Name: _____ Work Order: _____
11111111111111111111 Nissan Altima Sedan 21560R16 Taylor, Bill R000001
11111111111111111111 BMW E46 Sedan/Wagon 17" Wheel Taylor, Bill R000002
WBAB533461JUR1878 BMW E46 Cabrio 17" Wheel Felt, Doug R000003
WBAB533461JUR1878 BMW E46 Cabrio 17" Wheel Foster, Mike R000004
WBAB533461JUR1878 BMW E46 Cabrio 17" Wheel Foster, Mike R000008
WBAB533461JUR1878 BMW E46 Cabrio 17" Wheel Smith, John R000006
WBAB533461JUR1878 BMW E46 Cabrio 17" Wheel Smith, John R000008
WBAB533461JUR1878 BMW E46 Cabrio 17" Wheel Smith, John R000007
WBAB5334708021086 Mercedes-Benz 103 3077 Felt, Doug ME040811

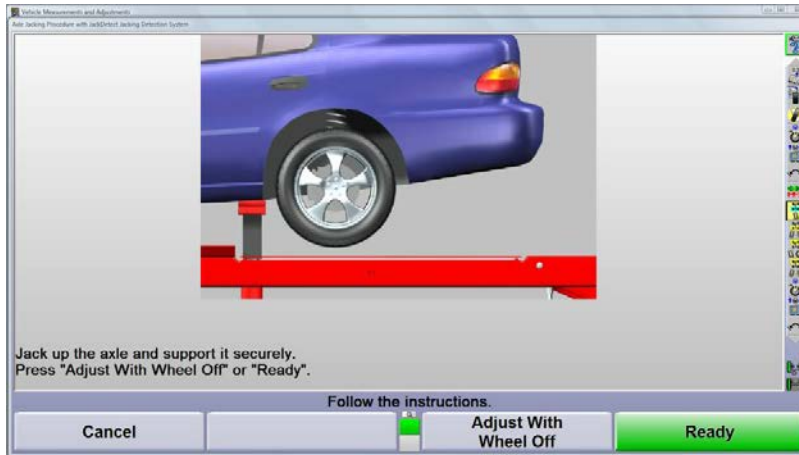
Soft Key Panel
Cancel ↑ ↓ Use Selected Item
Show "Before" Measurements Show "After" Measurements Print Measurements Print Summary
Recall Ref. Work Order Next Image Enlarge Image Help

4.2 Raise Selected Axle

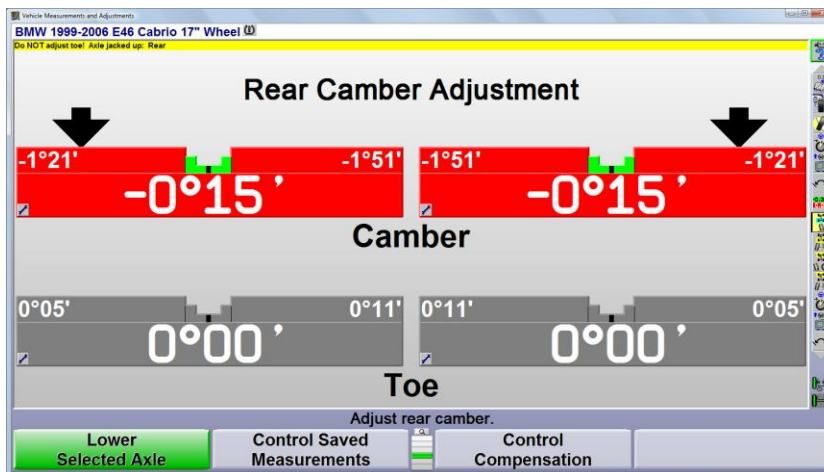
Front camber, front caster and rear camber may be adjusted with the tires lifted off the runway using the "Jack Up Selected Axle" softkey available on the fourth row.



Jack up the vehicle as indicated and press K4 "Ready".



Adjust the camber or caster angle as needed.



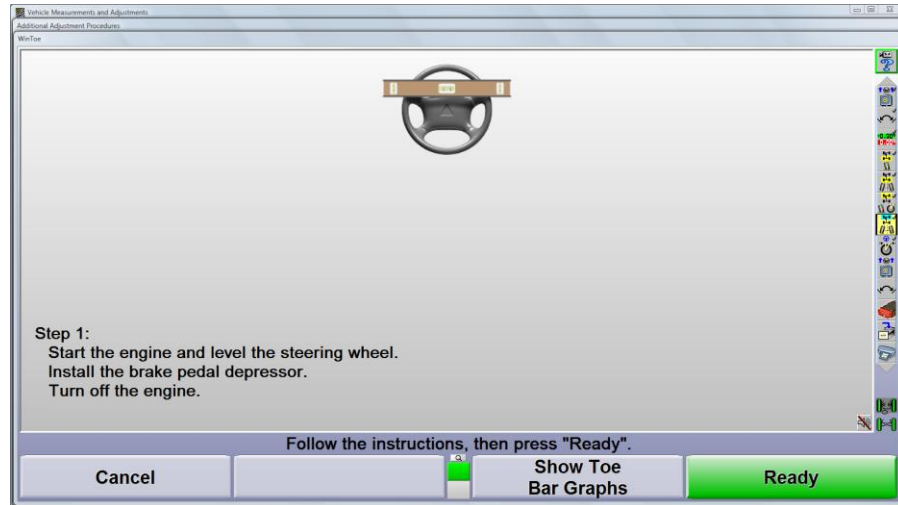
Press K1 "Lower Selected Axle" when adjustment is finished.

4.3 WinToe®

WinAlign®'s patented WinToe® program has been enhanced with the addition of WayUp and WayOut WinToe®, which were introduced with WinAlign® 10.0.

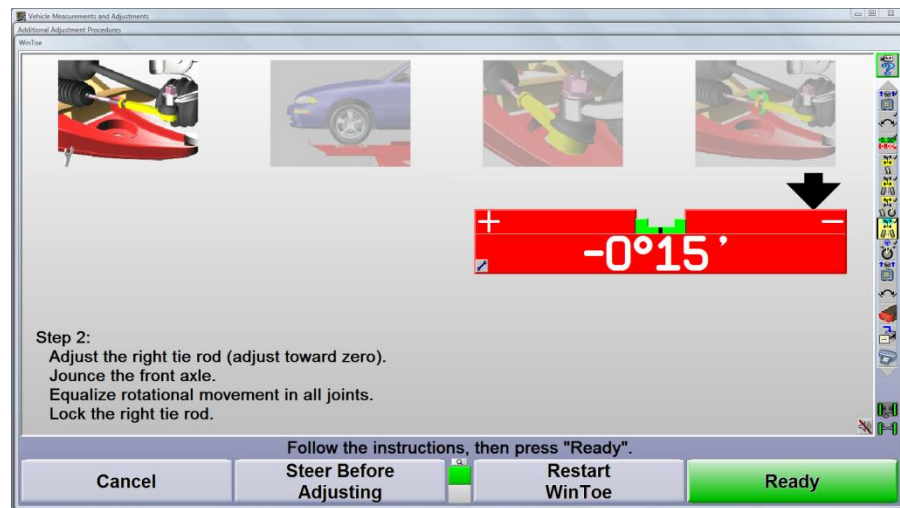
WayUp WinToe® is a seamless software program which extends the vertical range of the cameras. This allows the alignment lift to be raised higher without moving the cameras or losing front toe measurements.

WayOut WinToe® allows the front wheels to be turned during a front toe adjustment while maintaining accurate toe values.



Enter WinToe® from the "Make Additional Adjustment" softkey or through the context sensitive drop-menu obtained by clicking on the steering wheel icon on the front toe bar graphs.

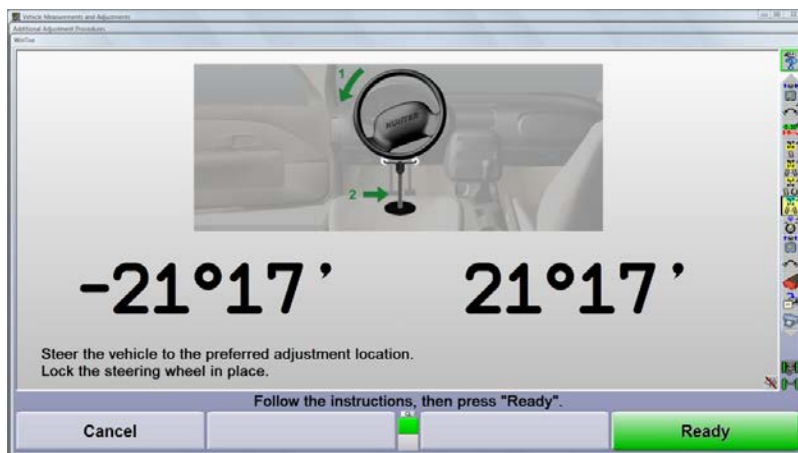
NOTE: Vehicles requiring the steering gear to be centered during the front toe adjustment should not use the WayOut WinToe® feature.



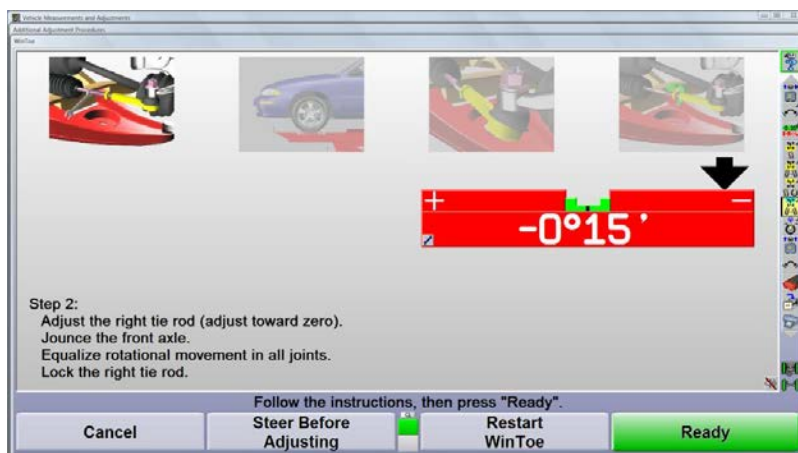
Select K2 "Steer Before Adjusting" to use the WayOut WinToe® program.



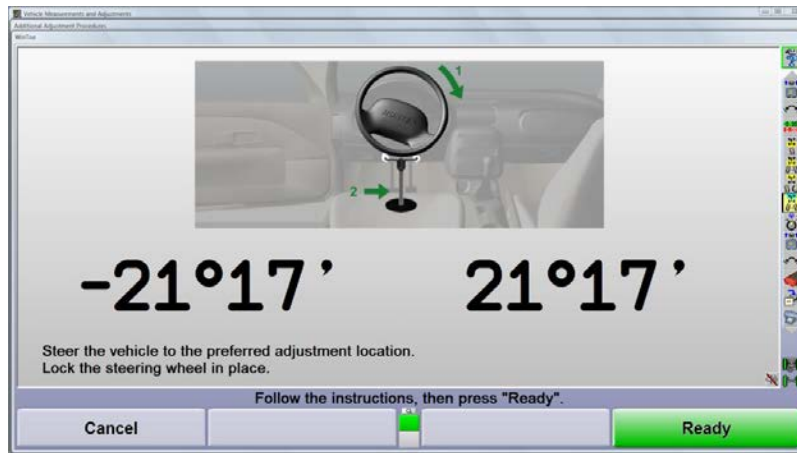
Follow the instructions on the display. Securely lock the front wheels in place after steering to the desired position. This may require using the ignition lock.



Press K4 "Ready" when the front wheels are secure.



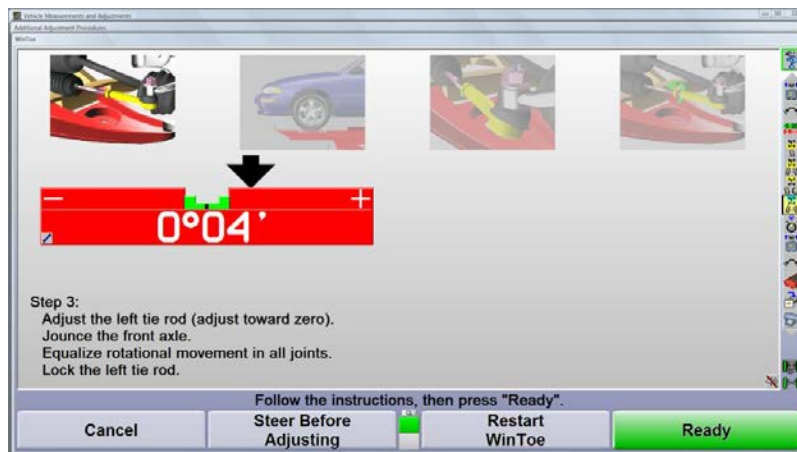
The toe adjustment display is shown with the same required change displayed before the front wheels were steered. Adjust toe and follow the instructions. Press K4 "Ready" when ready to adjust the left tie rod.



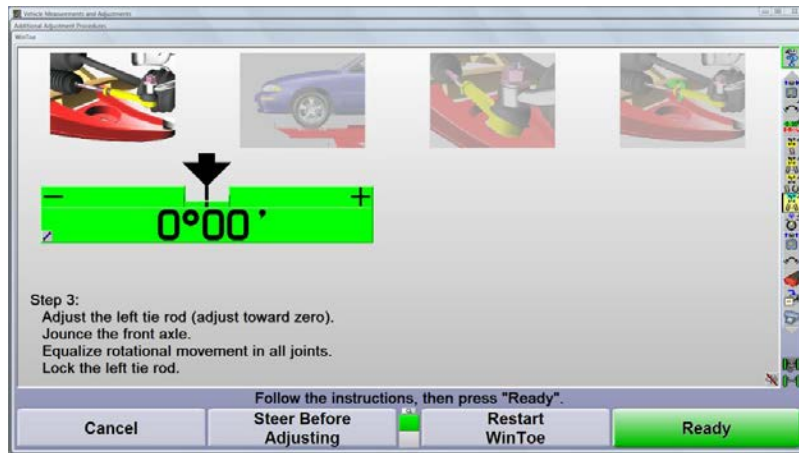
Steer the wheels to the position desired to access the left tie rod adjuster.



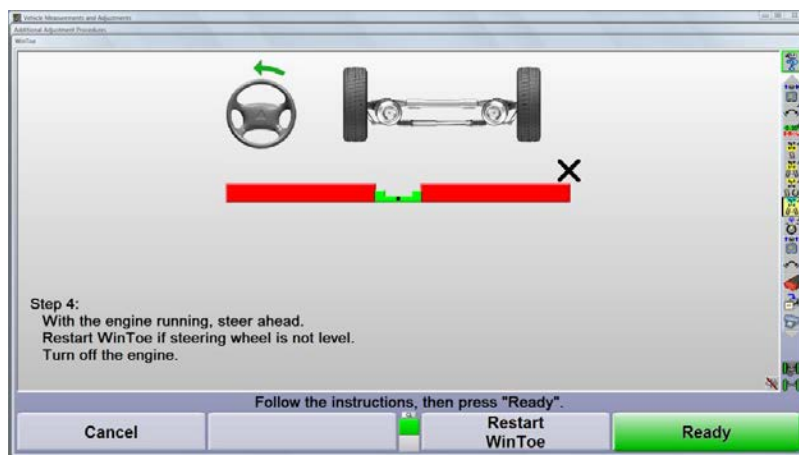
Lock the front wheels in place and press K4 "Ready".



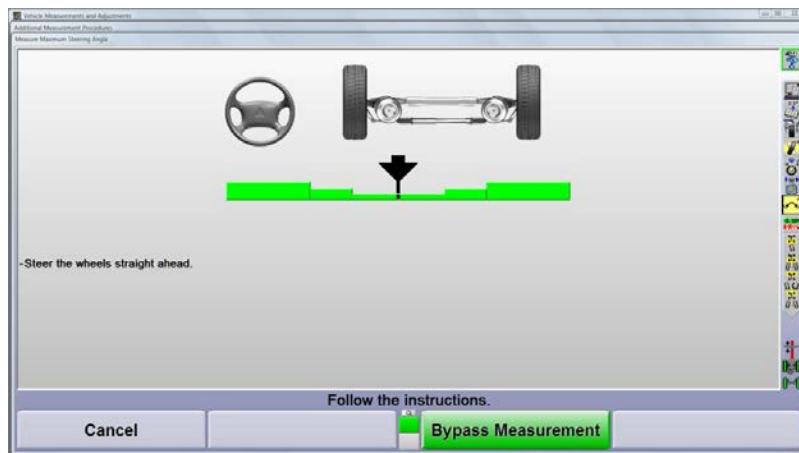
Adjust the left tie rod and follow the instructions displayed on the screen.



Press K4 "Ready" when the adjustment is complete and the instructions on the screen have been followed.






Verify the steering wheel is centered when the arrow is in the center of the bar graph.














Camera Based BMW KDS II and KDS II Plus Aligners

Standard accessories for DSP600 and HS4X1 Camera Based Sensor systems

| | | |
|---|---|--|
|  <p>175-348-1</p> | <p>BMW Adaptor w/120mm pins and large tire hooks.</p> | <p>BMW special adaptors with large tire hooks (with 120mm pins). For use with all DSP and HS4x1 sensors</p> |
|  <p>20-2050-1</p> | <p>HS4X1 and DSP600 Live Ride Height Targets</p> <p><i><u>Intended for ride height measurements from center of wheel to wheel opening lower edge.</u></i></p> | <p>For use with all HS4X1 and DSP600 sensors. Includes 4 Live Ride Height Targets and 20 adhesive strips. Included with new KDS II-Plus systems. (Requires WinAlign® 9.0 or greater)</p> |
|  <p>20-1885-1</p> | <p>Ride Height Handheld Wireless Remote Control</p> | <p>Ride Height Handheld Wireless Remote Control Kit 20-1885-1, ships standard with BMW DSP600 and HS4X1 Series Sensors and DSP508XF-B Sensors.</p> |

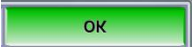
Optional accessories DSP600 and HS4X1 Camera Based Sensor systems

| | | |
|---|---------------------------------------|---|
|  <p>30-419-1</p> | <p>Icon Remote Indicator</p> | <p>New style remote indicator</p> |
|  <p>30-421-1</p> | <p>Icon Cordless Remote Indicator</p> | <p>New style cordless remote indicator</p> |
|  <p>30-418-1</p> | <p>Plus Cordless Remote Indicator</p> | <p>New style cordless remote indicator. Records tire pressure, tread depth, ride height and measures tire temperature and frame angle. Includes Tire Temperature Probe.</p> |

| | | |
|--|---|---|
|  <p>20-2072-1</p> | <p>XF2 Pod Kit</p> | <p>XF communication for use with Plus Cordless Remote Indicator, 30-418-1-1 and Icon Cordless Remote Indicator, 30-421-1.</p> |
|  <p>20-1978-1</p> | <p>Wheel-Off Adaptor</p> | <p>Wheel-Off adaptor may be used to make adjustments to camber and caster with wheel removed. Magnetic version also 20-1979-1</p> |
|  <p>20-2389-1</p> | <p>Storage Tray for Bar Code Reader</p> | <p>Bar Code Reader must be purchased from outside vendor. Recommended scanner is the Symbol LS4278</p> |
| <p>The following accessories are available for older wheel adaptor configurations</p> | | |
|  <p>20-1222-1</p> |  <p>Pin 135-302-1</p> <p>BMW 100mm Pins</p> <p>One kit required per adaptor.</p> | <p>Use with older BMW special adaptors (175-214-1) for some specialty wheels with deeper offsets.</p> <p>The current BMW special adaptor performs well without the 100mm pins</p> |
|  <p>175-214-1</p> | <p>(Older design)</p> <p>BMW Special Adaptor with 100mm pins</p> | <p>Available to replace broken or damaged BMW Special adaptors purchased prior to the availability of BMW Special Adaptor 175-348-1 (April 2004)</p> |
|  <p>20-1789-1</p> | <p>External tire clamp adaptor</p> | <p>Compatible only DSP600 and HS4X1 self-centering adaptors 175-321-1 or 175-325-1.</p> |
|  <p>20-1792-1</p> | <p>Extensions for self-centering</p> <p>175-321-1 or 175-325-1 adaptor</p> | <p>Compatible only with DSP600 self-centering adaptors 175-321-1 or 175-325-1. (set of sixteen, covers 4 wheel adaptors)</p> |

Glossary

| | |
|-----------------------------|--|
| "Adjustment" Specification | An alignment specification intended for use when a BMW vehicle has one or more alignment angles that are not with the "Measurement" specification |
| Alignment | The process of measuring and positioning all wheels attached to a common chassis |
| Angle | Two intersecting lines |
| Camber: | The inward or outward tilt of the top of the wheel as viewed from the front |
| Camber roll: | The change in front camber in a turn due to caster |
| Caster: | The forward or rearward tilt of the steering axis as viewed from the side |
| <i>Degree:</i> | A unit of measurement used to describe an angle. |
| Directional stability: | The tendency for a vehicle to maintain a directed path. |
| Dog tracking: | The appearance given when the thrustline is not parallel with the centerline of the vehicle. |
| Drift (lead): | The tendency of a vehicle to steer away from a directed course. Less severe than a pull, constant pressure at the steering wheel is not needed to maintain straight ahead. |
| Geometric centerline: | A line drawn through the midpoint of both front wheels and both rear wheels. |
| Included angle: | S.A.I. plus camber |
| Individual toe: | The angle formed by the intersection of an individual line drawn through the plane of one wheel and the centerline. |
| Max Steer Angle | The maximum steer angle left and right of center for both front wheels |
| "Measurement" Specification | An alignment specification intended to assess the wheel alignment condition of a vehicle manufactured by BMW |
| O.E.M. | An acronym used instead of Original Equipment Manufacturer. |
| Pivot point: | A component used to permit the steering knuckle to turn i.e. ball joint, strut bearing, king pin |
| Pull: | The tendency of a vehicle to steer away from a directed course. A constant pressure is maintained by the driver at the steering wheel to travel straight ahead. |
| Rack and pinion steering: | A steering system design that utilizes a pinion gear meshed with a rack gear to transmit steering forces to the spindle. |

| | |
|---------------------------|---|
| Returnability: | The tendency of the front wheels to return to the straight ahead position from a steered position. |
| Road isolation | The ability of the vehicle to absorb or dissipate road vibrations. |
| Sensor compensation | A process which measures lateral and axial runout to determine the location of the center of the hub/axle |
| Setback | The angle formed by the geometric centerline and a line drawn perpendicular to the front axle. |
| Softkey | A graphic menu icon used to operate WinAlign® software  |
| Steering Angle Sensor | An electro-mechanical device designed to measure steering wheel angle and rate of turn |
| Steering axis | A line drawn between the upper and lower pivot points of the spindle. |
| Steering arm | A steering component that connects the outer tie rod to the spindle. The angle of the steering arm to the wheel's axis determines turning angle. |
| Steering Axis Inclination | An angle formed by a line drawn through the upper and lower pivot points of the steering knuckle and a vertical |
| S.A.I. | An angle formed by a line drawn through the upper and lower pivot points of the steering knuckle and a vertical line drawn through the lower pivot point, as viewed from the front. |
| Slip plates | A free floating surface designed to allow a rear suspension to relax |
| Suspension: | An assembly used to support weight, dampen shock, and maintain tire contact and proper wheel to chassis position. |
| Thrust angle: | The angle formed between thrustline and geometric centerline. |
| Thrust line: | The bisector of rear toe, also described as a line drawn in the direction the rear wheels are pointed. |
| Total toe (angular): | The angle formed by the intersection of lines drawn through both wheels of a given axle. |
| Total toe (linear): | The difference in measurements taken across the front of the tires versus a measurement taken across the rear of the same tires. |
| Tracking: | The interrelated paths taken by the front and rear wheels. |
| Turn plate | A free floating surface designed to allow front wheels to remain free of binding during a wheel alignment |
| Turning angle: | The angle of a wheel during a turn when the opposing front wheel is steered to a specific reference angle |
| Wander: | The tendency of a vehicle to drift to either side of a directed course. |
| WinToe® | A procedure used to adjust front toe patented by Hunter Engineering Co. |

